



NovaTec SIP-Gateway S3



The **S3 SIP Gateway** enables the operation of the preferable ISDN devices such as PC cards, ISDN PBX's or ISDN video-conference equipment in an IP network. Analogue equipment such as faxes, modems or even telephones can also be attached.

The S3 was developed to distribute and connect the conventional digital and analogue equipment to an IP network economically. It can react as a VoIP-Host or as a VoIP-Terminal.

The **S3 SIP Gateway** is multitalented and has lots of capabilities. Such as:

- Integrating available video-conference equipment into a VoIP infrastructure.
- Operating U_{p0}-equipment and systems with a VoIP infrastructure.
- Operating equipment, systems and other industrial machines with analogue ISDN BRI or U_{p0} interfaces (for data and speech) to a VoIP infrastructure e. g. Cisco networks.
- Synchronized data transfer over VoIP infrastructure with help of RMCS (RTP Master Clock Server) – see also Example 2 on next page.
- Worldwide spatial relocation of BRI respectively U_{p0} equipment over an IP network with D-channel transparency for proprietary protocols.
- End-to-End encryption of ISDN-BRI or U_{p0} equipment via IP network with SRTP (in the standard package).
- VLAN (virtual LAN) acc. 802.1Q.

The **S3 SIP Gateway** is available in various versions and offers, dependent on the version, the following interfaces:

- IP (SIP),
- Two analogue interfaces (acc. ITU-T G.712 and Q.552), incl. T38 for fax,
- two ISDN BRI interfaces (TE/NT mode configurable),
- two U_{p0} interfaces (TE/NT configurable).

Selection of possible users:

- Private households,
- Small- and Medium-sized Enterprises,
- International Enterprises,
- VoIP Providers (SIP),
- Internet Service Providers,
- Municipal Network Operators,
- Cable TV Providers.

Options:

- The S3-R version can be used as RMCS client. In this case ISDN Clock synchronization is achieved via RTP Streams.
- The S3 can be implemented in the NovaTec Network-Management-System and can be used in its full range to monitor and maintain.

Housing (wall mounting and table top):

Depth x width x height: 4 x 21 x 16 cm

Weight incl. power supply: approx. 2 kg

We change the shape of the world

Delivery scope:

NovaTec S3, power supply and cable, USB cable, mounting set, short instruction.

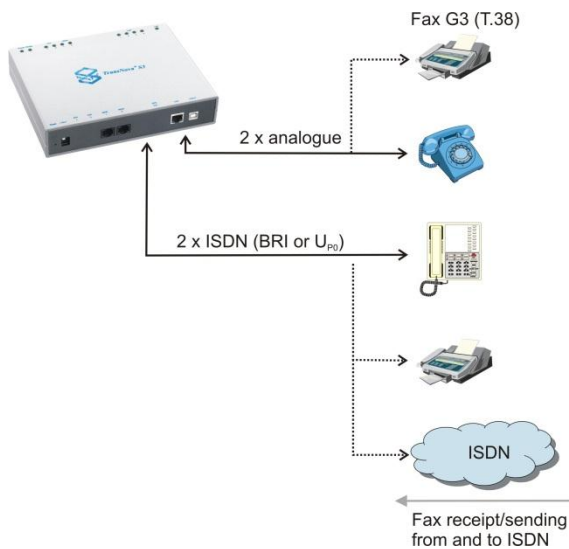
Ordering numbers:

1F8000-R ^{*/**}	2x BRI (both TE/NT configurable) / 4x Codecs / RMCS
1F8020-R ^{**}	2x BRI (both TE/NT configurable) / 2x analogue / 4x Codecs / RMCS
1F8030-R ^{**}	2x U _{p0} (both TE/NT configurable) / 2x analogue / 4x Codecs / RMCS
1F8040	2x analogue / 4x Codecs

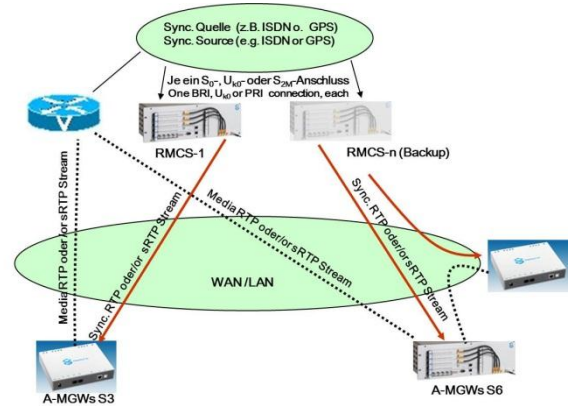
* Cisco only distributes the S3 (Cisco VG-2BRI-R) as version 1F8000-R.

** In case of clock sensitive applications these versions can be produced with an additional highly accurate clock unit card.

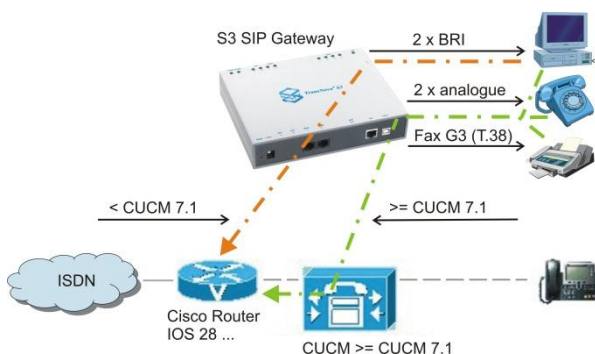
Example 1: S3 as ISDN + analogue terminal adapter



Example 2: S3 as RMCS client for the synchronization via ISDN



Example 3: S3 within the Cisco CallManager and IOS environment



Example 4: Connection of BRI, U_{p0}- and analogue end devices via the IP net to a PABX

