



NovaTec SIP Gateway



NovaTec SIP Gateway in S5+ chassis

The **NovaTec SIP Gateway** enables the operation of the preferable ISDN devices such as PC cards, ISDN PBX's or ISDN video-conference equipment in an IP network. Analogue equipment such as faxes, modems or even telephones can also be attached*.

The **NovaTec SIP Gateway** was developed to distribute and connect the conventional digital and analogue equipment to an IP network economically. The S3 can react as a VoIP-Host or as a VoIP-Terminal.

The system is multitalented and has lots of capabilities. Such as:

- Integrating available video-conference equipment into a VoIP infrastructure.
- Operating U_{P0} -equipment and systems with a VoIP infrastructure*.
- Operating equipment, systems and other industrial machines with analogue ISDN BRI or U_{P0} * interfaces (for data and speech) to a VoIP infrastructure i. e. Cisco networks.
- Synchronised data transfer over VoIP infrastructure utilizing a GPS receiver.
- Worldwide spatial relocation of BRI respectively U_{P0} * equipment over an IP network with D-channel transparency for proprietary protocols.
- End-to-End encryption of ISDN-BRI or U_{P0} * equipment via IP network with SRTP (in the standard package) and via ISDN (optional).
- Fax-to-Email server function to T37 standard.
- VLAN (virtual LAN) according to 802.1Q.

The **NovaTec SIP Gateway** is available in various versions and is version dependent offering the following interfaces:

- IP (SIP),
- up to 48 ISDN-BRI interface/s (TE/NT configurable),
- U_{P0} interfaces (TE/NT configurable)*,
- analogue interfaces (according to ITU-T G.712 and Q.552) including T38 for fax*.

Selection of possible users:

- Private households,
- small and medium-sized enterprises,
- international enterprises,
- VoIP Providers (SIP),
- Internet Service Providers,
- Municipal Network Operators,
- Cable TV Providers.

Options:

- One useful option is the GPS-receiver, used to synchronize timing and clock sensitive ISDN applications such as ISDN video-conference equipment. Available tools can be used to locate remote equipment.
- The **NovaTec SIP Gateway** can be implemented in the NovaTec Network-Management-System and can be used in its full range to monitor and maintain.
- ISDN-to-ISDN encryption guarantees complete tapping-free security for speech and data.

*available soon



We change the shape of the world



Technical data:

The NovaTec SIP Gateway is a modular system and depending on its expansion stage it is available in one of the following chassis (19" technology; width x depth x heights):

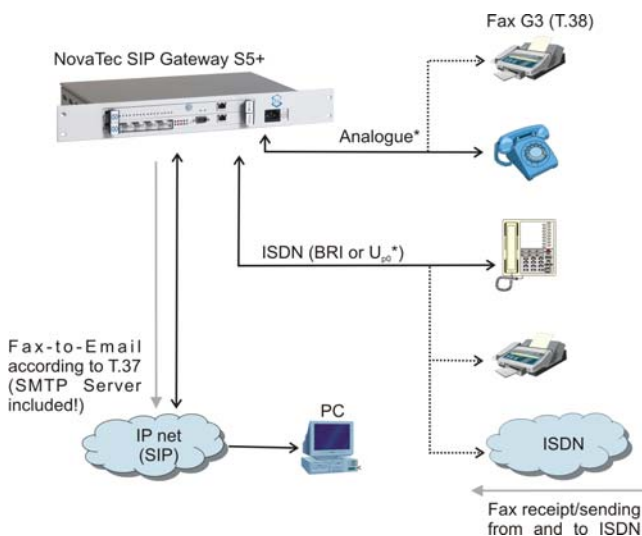
S5+: 48 x 22 x 6 cm. Weight: approx. 5 kg to max. 6,5 kg

(also available as desk top/wall mounted chassis: 36 x 22 x 6 cm. Weight: approx. 4,5 kg to max. 6 kg)

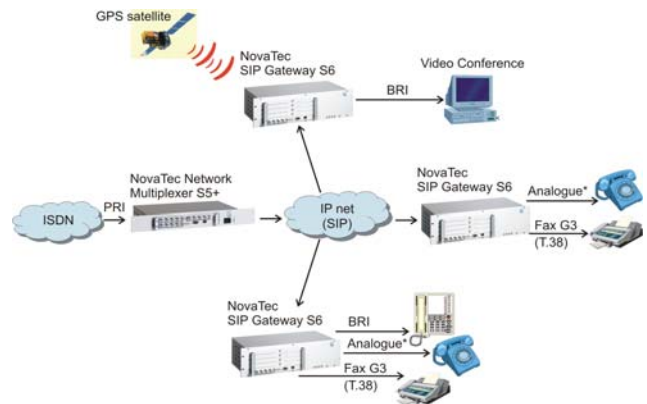
S6: 48 x 22 x 14 cm. Weight: approx. 7 kg to max. 10 kg

S20: 48 x 26 x 26,5 cm. Weight: approx. 7 kg to max. 15,8 kg

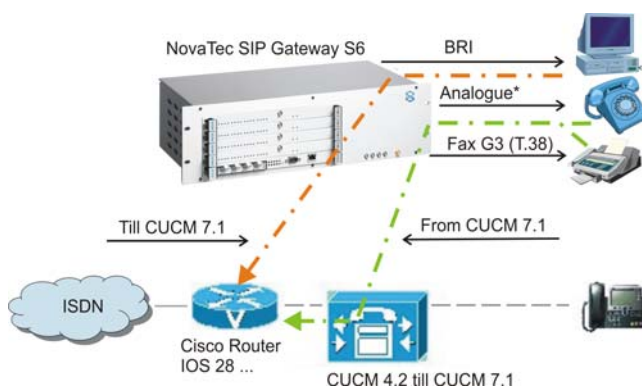
Example-1: NovaTec SIP Gateway as ISDN + analogue* terminal adapter with Fax-to-Email function.



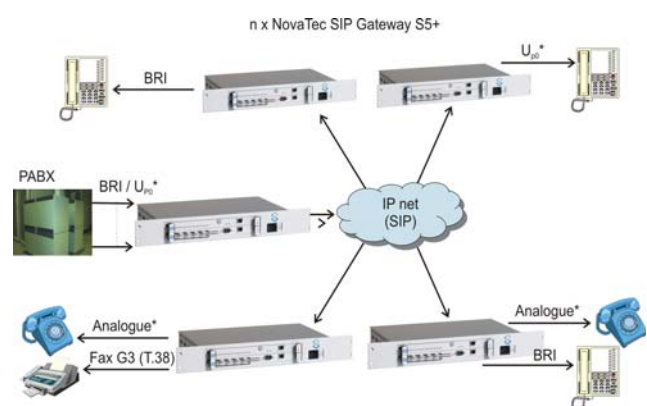
Example-2: Complete networking with NovaTec components.



Example-3: NovaTec SIP Gateway within the Cisco CallManager and IOS environment.



Example-4: Connection of BRI, U₀* and analogue* end devices via the IP net to a PABX.



*available soon