



We change the shape of the world

## **NovaTec release information NMS 7.1.2**

For details about the installation and uninstallation procedure please read the readme file in the installation folder. The readme file is also available on the NovaTec ([www.novatec.de](http://www.novatec.de)) website.

The NMS is copyright protected by a USB dongle. The dongle limits the number of simultaneously started NMS entities. The user shall never try to start more NMS entities than allowed by the dongle.

1. **Firmware**
2. **Changes and Bug fixes**
3. **Install and start NMS 7.1.2**
4. **Applications**
5. **Requirements**
6. **Performance considerations**
7. **Dependencies**

### **1. Firmware**

- If the connection to target does not use TLS, NMS 7.1.2 works with firmware release 00.06.06.15 and above.
- If the connection to target uses TLS, NMS 7.1.2 works with firmware release 00.07.00.63 and above.

### **2. New Features and Bug fixes**

#### **2.1 New Features in 7.1.2:**

In Call Home Job Management we can see beside the date in the "last notify" field, the time also.

#### **2.2 Bug fixes in 7.1.2:**

- In Case the CPU load increased to 100% for a while, because of other applications on the server, the Network Services in NMS could not access the memory in time and crashed. The problem has been solved

### **3. Install and start NMS 7.1.2:**

- Please uninstall all previous NovaTec NMS releases.
- Insert CD and start setup.exe.
- Insert a NMS-dongle in a USB slot. Please note that if you are using a virtual machine, you need to install an IP-USB-HUB and insert the NMS-dongle in the IP-USB-HUB.
- After installing NMS with setup.exe, start NMS by

START->All Programs->Novatec->Network Management System 7.1.2->job Management for configuration.

START->All Programs->Novatec->Network Management System 7.1.2->Network Services



We change the shape of the world

START->All Programs->Novatec->Network Management System 7.1.2->Network Management System for the Server.

#### 4. Applications

NMS 7.1.1.1 includes the following applications:

- Network Management System 7.1.2
- Call Home Job Management 7.1.2
- NMS Client 7.1.2
- NovaTec Network Services 7.1.2

The following applications are no longer included in this package but in the NMP packages which can be downloaded from the NovaTec Website:

- Call Server 6.6
- TraceInfo Client 6.6

The following applications are no longer included in this package and are no longer available in the NMP packages:

- CCU Service Terminal 32 bit 6.6
- NovaTec CDR Evaluation 6.4

#### 5. Requirements

The following operating systems are supported:

- Microsoft Windows XP (Service Pack 2)
- Microsoft Windows 2003 Server (Service Pack 2)
- Microsoft Windows 2008 Server (Service Pack 2)

The machine on which this software is being installed should meet the following minimum requirements:

- 2 GB RAM
- 3 GHz CPU
- 1 GB free disk space
- CD-ROM drive
- IP-USB-HUB (only if the NMS is running on a virtual machine (VM))



We change the shape of the world

## 6. Performance considerations

One NMS instance can handle one job at a time. Depending on the job type (fault management, configuration upload, firmware upload etc.) the duration of the job differs. This limits the number of jobs which can be carried out in a certain time.

The following table shows typical job durations:

Job type	Duration (with TLS)
Fault management (receiving a Call Home event only)	10 s
Firmware update	16 min
Configuration update (without MoH file)	1:30 min

The duration of the job can differ depending on the network performance. The duration of the configuration update can differ if a configuration is significantly larger than usual.

The performance of the NMS can be increased by starting multiple NMS instance on the same PC. The NMS dongle controls how much NMS instances can be started simultaneously. If the NMS dongle allows 3 NMS instances then the performance improves by factor 3 in comparison to just starting one NMS instance.

## 7. Dependencies

The NMS 7.1.2 has no dependencies to other NovaTec software packages (e. g. NMP). NovaTec-GWs should use firmware 00.06.07.02 or higher to send Call Home events in the correct format to the NMS 7.1.2.

**November 2011**

**NovaTec Kommunikationstechnik GmbH**



We change the shape of the world

## **NovaTec release information NMS 7.1.1.1**

For details about the installation and uninstallation procedure please read the readme file in the installation folder. The readme file is also available on the NovaTec ([www.novatec.de](http://www.novatec.de)) website.

The NMS is copyright protected by a USB dongle. The dongle limits the number of simultaneously started NMS entities. The user shall never try to start more NMS entities than allowed by the dongle.

1. **Firmware**
2. **Changes and Bug fixes**
3. **Known Issues**
4. **Install and start NMS 7.1.1.1**
5. **Applications**
6. **Requirements**
7. **Performance considerations**
8. **Dependencies**

### **1. Firmware**

- If the connection to target does not use TLS, NMS 7.1.1.1 works with firmware release 00.06.06.15 and above.
- If the connection to target uses TLS, NMS 7.1.1.1 works with firmware release 00.07.00.63 and above.

### **2. New Features and Bug fixes**

#### **2.1 New Features in 7.1.1.1:**

None.

#### **2.2 Bug fixes in 7.1.1.1:**

##### **Call Home Job Database**

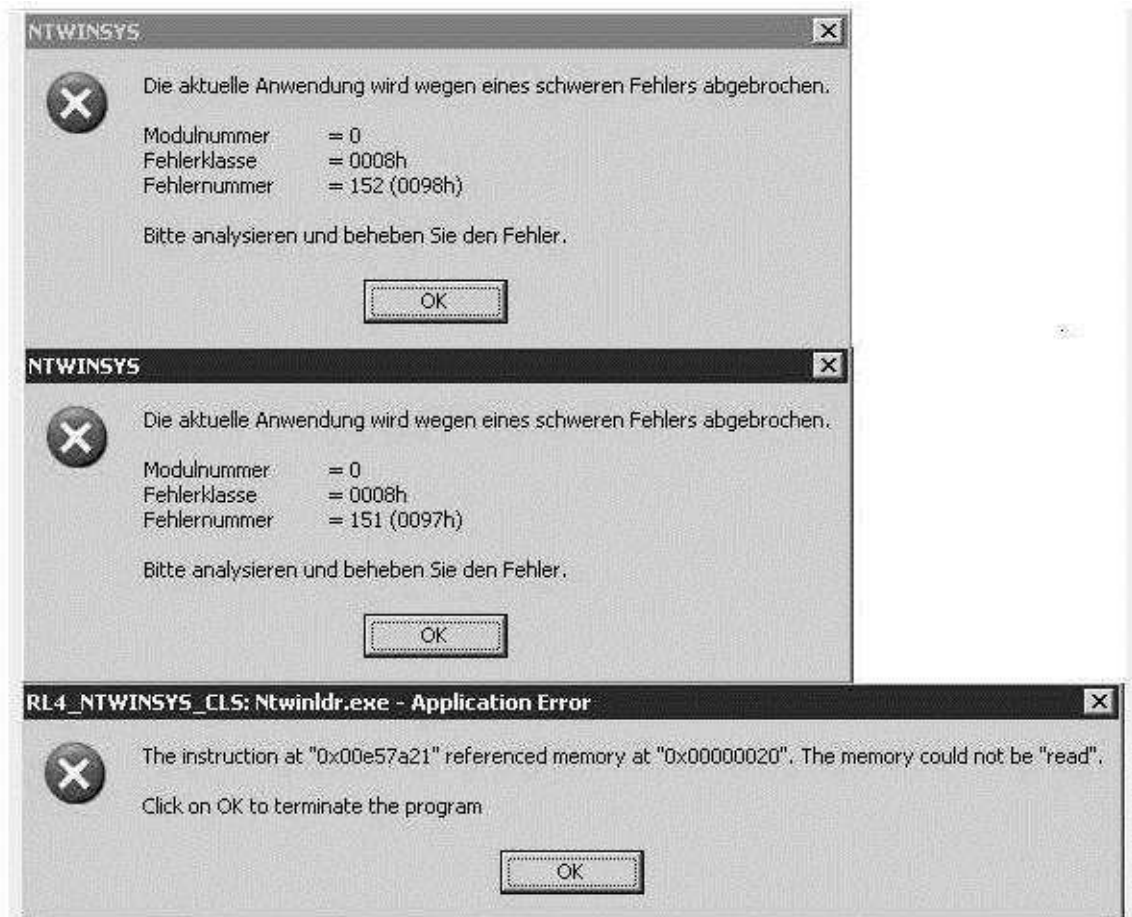
- A wrong setting of the flag “Unicode Compression” in the job.mdb has been corrected. The wrong flag lead to the problem, that the IP address of the target systems saved in the database included a trailing whitespace. This lead to problems using NGN-MC. NGN-MC can not work with the corrupted IP address and therefore could not connect to the target systems.  
**Customers going to use NovaTec NGN-MC or NovaTec NAMES products in the future and intend to use the actual NMS data base to import in NAMES, shall use this NMS version.**  
The NMS software itself has not been changed, only the job database in the installation package has been changed.



We change the shape of the world

### 3. Known Issues:

The NMS Service crashes from time to time under non-identified circumstances with the following error report and is actually under analysis process:



### 4. Install and start NMS 7.1.1.1:

- Please uninstall all previous NovaTec NMS releases.
- Insert CD and start setup.exe.
- Insert a NMS-dongle in a USB slot. Please note that if you are using a virtual machine, you need to install an IP-USB-HUB and insert the NMS-dongle in the IP-USB-HUB.
- After installing NMS with setup.exe, start NMS by

START->All Programs->Novatec->Network Management System 7.1.1.1->job Management for configuration.

START->All Programs->Novatec->Network Management System 7.1.1.1->Network Services

START->All Programs->Novatec->Network Management System 7.1.1.1->Network Management System for the Server.



We change the shape of the world

## 5. Applications

NMS 7.1.1.1 includes the following applications:

- Network Management System 7.1.1.1
- Call Home Job Management 7.1.1.1
- NMS Client 7.1.1.1
- NovaTec Network Services 7.1.1.1

The following applications are no longer included in this package but in the NMP packages which can be downloaded from the NovaTec Website:

- Call Server 6.6
- TraceInfo Client 6.6

The following applications are no longer included in this package and are no longer available in the NMP packages:

- CCU Service Terminal 32 bit 6.6
- NovaTec CDR Evaluation 6.4

## 6. Requirements

The following operating systems are supported:

- Microsoft Windows XP (Service Pack 2)
- Microsoft Windows 2003 Server (Service Pack 2)
- Microsoft Windows 2008 Server (Service Pack 2)

The machine on which this software is being installed should meet the following minimum requirements:

- 2 GB RAM
- 3 GHz CPU
- 1 GB free disk space
- CD-ROM drive
- IP-USB-HUB (only if the NMS is running on a virtual machine (VM))



We change the shape of the world

## 7. Performance considerations

One NMS instance can handle one job at a time. Depending on the job type (fault management, configuration upload, firmware upload etc.) the duration of the job differs. This limits the number of jobs which can be carried out in a certain time.

The following table shows typical job durations:

Job type	Duration (with TLS)
Fault management (receiving a Call Home event only)	10 s
Firmware update	16 min
Configuration update (without MoH file)	1:30 min

The duration of the job can differ depending on the network performance. The duration of the configuration update can differ if a configuration is significantly larger than usual.

The performance of the NMS can be increased by starting multiple NMS instance on the same PC. The NMS dongle controls how much NMS instances can be started simultaneously. If the NMS dongle allows 3 NMS instances then the performance improves by factor 3 in comparison to just starting one NMS instance.

## 8. Dependencies

The NMS 7.1.1.1 has no dependencies to other NovaTec software packages (e. g. NMP). NovaTec-GWs should use firmware 00.06.07.02 or higher to send Call Home events in the correct format to the NMS 7.1.1.1.

September 2011

NovaTec Kommunikationstechnik GmbH



We change the shape of the world

## **NovaTec release information NMS 7.1.1**

For details about the installation and uninstallation procedure please read the readme file in the installation folder. The readme file is also available on the NovaTec ([www.novatec.de](http://www.novatec.de)) website.

The NMS is copyright protected by a USB dongle. The dongle limits the number of simultaneously started NMS entities. The user shall never try to start more NMS entities than allowed by the dongle.

1. **Firmware**
2. **Changes and Bug fixes**
3. **Known Issues**
4. **Install and start NMS 7.1.1**
5. **Applications**
6. **Requirements**
7. **Performance considerations**
8. **Dependencies**

### **1. Firmware**

- If the connection to target does not use TLS, NMS 7.1.1 works with firmware release 00.06.06.15 and above.
- If the connection to target uses TLS, NMS 7.1.1 works with firmware release 00.07.00.63 and above.

### **2. New Features and Bug fixes**

#### **2.1 New Features in 7.1.1:**

None.

#### **2.2 Bug fixes in 7.1.1:**

##### **Call Home Job Management**

- It was not possible to import a csv file. The problem has been solved.

##### **Network Management System**

- When NMS ran for a long time, crashes could occur while the NMS tried to send snmp- Notifications. The Bug has been solved.

##### **NovaTec Network Services**

If NMS was used with TLS, then with the time the memory usage increased. The bug has been solved.



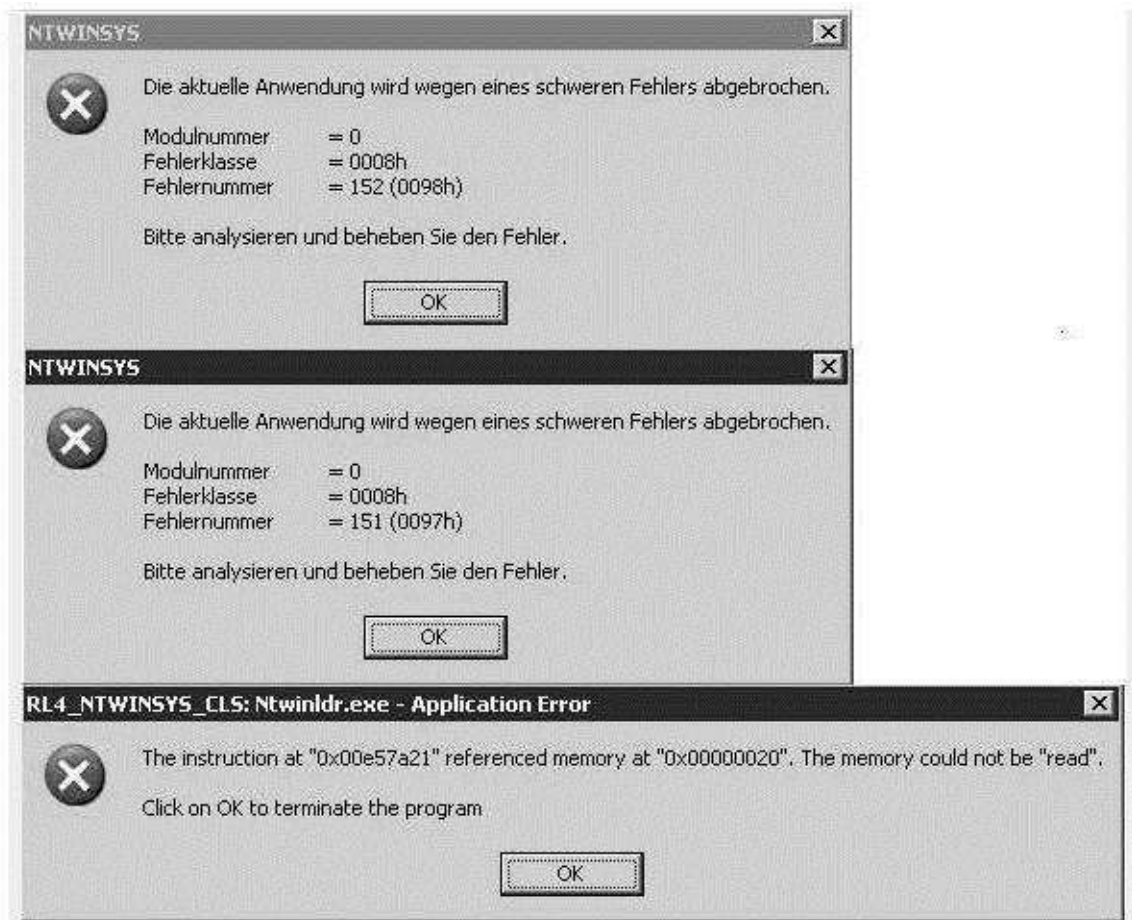


We change the shape of the world

If an error occurred on starting the Network Services then the application stopped working/crashed after reporting the errors. Now, the application will be closed after error reporting. If the errors are caused by faulty settings, then these can be corrected when the Network Services are started again.

### 3. **Known Issues:**

The NMS Service crashes from time to time under non-identified circumstances with the following error report and is actually under analysis process:



### 4. **Install and start NMS 7.1.1:**

- Please uninstall all previous NovaTec NMS releases.
- Insert CD and start setup.exe.
- Insert a NMS-dongle in a USB slot. Please note that if you are using a virtual machine, you need to install an IP-USB-HUB and insert the NMS-dongle in the IP-USB-HUB.
- After installing NMS with setup.exe, start NMS by

START->All Programs->Novatec->Network Management System 7.1.1->job Management for configuration.



We change the shape of the world

START->All Programs->Novatec->Network Management System 7.1.1->Network Services

START->All Programs->Novatec->Network Management System 7.1.1->Network Management System for the Server.

## 5. Applications

NMS 7.1.1 includes the following applications:

- Network Management System 7.1.1
- Call Home Job Management 7.1.1
- NMS Client 7.1.1
- NovaTec Network Services 7.1.1

The following applications are no longer included in this package but in the NMP packages which can be downloaded from the NovaTec Website:

- Call Server 6.6
- TraceInfo Client 6.6

The following applications are no longer included in this package and are no longer available in the NMP packages:

- CCU Service Terminal 32 bit 6.6
- NovaTec CDR Evaluation 6.4

## 6. Requirements

The following operating systems are supported:

- Microsoft Windows XP (Service Pack 2)
- Microsoft Windows 2003 Server (Service Pack 2)
- Microsoft Windows 2008 Server (Service Pack 2)

The machine on which this software is being installed should meet the following minimum requirements:

2 GB RAM

3 GHz CPU

1 GB free disk space

CD-ROM drive

IP-USB-HUB (only if the NMS is running on a virtual machine (VM))



We change the shape of the world

## 7. Performance considerations

One NMS instance can handle one job at a time. Depending on the job type (fault management, configuration upload, firmware upload etc.) the duration of the job differs. This limits the number of jobs which can be carried out in a certain time.

The following table shows typical job durations:

Job type	Duration (with TLS)
Fault management (receiving a Call Home event only)	10 s
Firmware update	16 min
Configuration update (without MoH file)	1:30 min

The duration of the job can differ depending on the network performance. The duration of the configuration update can differ if a configuration is significantly larger than usual.

The performance of the NMS can be increased by starting multiple NMS instance on the same PC. The NMS dongle controls how much NMS instances can be started simultaneously. If the NMS dongle allows 3 NMS instances then the performance improves by factor 3 in comparison to just starting one NMS instance.

## 8. Dependencies

The NMS 7.1.1 has no dependencies to other NovaTec software packages (e.g. NMP). NovaTec- GWs should use firmware 00.06.07.02 or higher to send Call Home events in the correct format to the NMS 7.1.1.

**August 2011**

**NovaTec Kommunikationstechnik GmbH**



We change the shape of the world

## **NovaTec release information NMS 7.1.0**

For details about the installation and uninstallation procedure please read the readme file in the installation folder. The readme file is also available on the NovaTec ([www.novatec.de](http://www.novatec.de)) website.

1. **Firmware**
2. **Changes and Bug fixes**
3. **Install and start NMS 7.1**
4. **Applications**
5. **Requirements**
6. **Performance considerations**
7. **Dependencies**

### **1. Firmware**

- If the connection to target does not use TLS, NMS 7.1.1 works with firmware release 00.06.06.15 and above.
- If the connection to target uses TLS, NMS 7.1.1 works with firmware release 00.07.00.63 and above.

### **2. New Features and Bug fixes**

#### **2.1 New Features in 7.1.0:**

##### **Network Management System:**

- new SNMP-Notifications (-Traps):
  - L1/-L2 active / -inactive including system ID and physical address of causing board

##### **Bug fixes in 7.1.0:**

##### **Network Management System:**

- The configuration database for the NovaTec Maintenance Package was not downloadable after a configuration was updated by using the NMS. The problem has been solved.

### **3. Install and start NMS 7.1:**

- Please uninstall all previous NovaTec NMS releases.
- Insert CD and start setup.exe.
- Insert a NMS-dongle in a USB slot. Please note that if you are using a virtual machine, you need to install an IP-USB-HUB and insert the NMS-dongle in the IP-USB-HUB.
- After installing NMS with setup.exe, start NMS by



We change the shape of the world

START->All Programs->Novatec->Network Management System 7.1.1->job Management for configuration.

START->All Programs->Novatec->Network Management System 7.1.1->Network Services

START->All Programs->Novatec->Network Management System 7.1.1->Network Management System for the Server.

#### 4. Applications

NMS 7.1.1 includes the following applications:

- Network Management System 7.1
- Call Home Job Management 7.1
- NMS Client 7.1
- NovaTec Network Services 7.1
- CCU Service Terminal 32 bit 6.6
- Call Server 6.6
- TraceInfo Client 6.6
- NovaTec CDR Evaluation 6.4

#### 5. Requirements

The following operating systems are supported:

- Microsoft Windows XP (Service Pack 2)
- Microsoft Windows 2003 Server (Service Pack 2)
- Microsoft Windows 2008 Server (Service Pack 2)

The machine on which this software is being installed should meet the following minimum requirements:

- 2 GB RAM
- 3 GHz CPU
- 1 GB free disk space
- CD-ROM drive
- IP-USB-HUB (only if the NMS is running on a virtual machine (VM))



We change the shape of the world

## 6. Performance considerations

One NMS instance can handle one job at a time. Depending on the job type (fault management, configuration upload, firmware upload etc.) the duration of the job differs. This limits the number of jobs which can be carried out in a certain time.

The following table shows typical job durations:

Job type	Duration (with TLS)
Fault management (receiving a Call Home event only)	10 s
Firmware update	16 min
Configuration update (without MoH file)	1:30 min

The duration of the job can differ depending on the network performance. The duration of the configuration update can differ if a configuration is significantly larger than usual.

The performance of the NMS can be increased by starting multiple NMS instance on the same PC. The NMS dongle controls how much NMS instances can be started simultaneously. If the NMS dongle allows 3 NMS instances then the performance improves by factor 3 in comparison to just starting one NMS instance.

## 7. Dependencies

The NMS 7.1 has no dependencies to other NovaTec software packages (e.g. NMP). NovaTec-GWs should use firmware 00.06.07.02 or higher to send Call Home events in the correct format to the NMS 7.0.5.

April 2011

**NovaTec Kommunikationstechnik GmbH**



We change the shape of the world

## **NovaTec release information NMS 7.0.5**

1. **Firmware**
2. **Changes and Bug fixes**
3. **PC Requirements**
4. **Install and start NMS 7.0.5**

### **1. Firmware**

- If the connection to target does not use TLS, NMS 7.1.1 works with firmware release 00.06.06.15 and above.
- If the connection to target uses TLS, NMS 7.1.1 works with firmware release 00.07.00.63 and above.

### **2. New Features and Bug fixes**

#### **2.1 New Features in 7.0.5:**

##### **Network Management System:**

- Add in a Button to test the connection to the SNMP-Trap-Receiver. When this button is clicked, a warmstart-notification will be sent for each A-MGW to the SNMP Receiver.

#### **Bug fixes in 7.0.5:**

##### **Network Services:**

- Bugs description:
  - a.) The IP- address and MAC-address did not appear in each SNMP notification.
  - b.) The MAC-address was not written in the job database whenever an event reaches NMS

This bugs were not in Release 7.0.3 but occurs since Release 7.0.4.
- Reason:

Network Service did not transport two information elements (IE) to NMS. These two IEs are MAC-Adress-IE and IP-Address-IE.

#### **2.2 Changes in 7.0.4**

##### **Network Services:**

- The validation depth for SSL/TLS is now limited to 9 levels.

#### **2.3 Changes in 7.0.3**

##### **Network Services:**

- TLS added is Network Services

### **3. PC Requirements**

The minimum requirement of a PC, where NMS 7.0.5 is installed, should be:



We change the shape of the world

- Windows XP or Windows Vista
- 2 GB RAM
- 3 GHz CPU
- 1 GB free disk storage
- CD Drive

#### 4. **Install and start NMS 7.0.5:**

- Please uninstall all previous NovaTec NMS releases.
- Insert CD and start setup.exe.
- Insert a NMS-dongle in a USB slot. Please note that if you are using a virtual machine, you need to install an IP-USB-HUB and insert the NMS-dongle in the IP-USB-HUB.
- After installing NMS with setup.exe, start NMS by

START->All Programs->Novatec->Network Management System 7.1.1->job Management for configuration.

START->All Programs->Novatec->Network Management System 7.1.1->Network Services

START->All Programs->Novatec->Network Management System 7.1.1->Network Management System for the Server.

**July 2010**

**NovaTec Kommunikationstechnik GmbH**