

We change the shape of the world



Migration solutions with NovaTec products

NovaTec Kommunikationstechnik GmbH

welcomes

You

to this presentation

Contents



- Product range
- Sales problems in 2007 and 2008 with the new ITC infrastructures
- How can NovaTec help?
- Field reports on realized projects
- NovaTec products fitting the respective problem
- The business activities that we offer
- Why NovaTec?

Product range



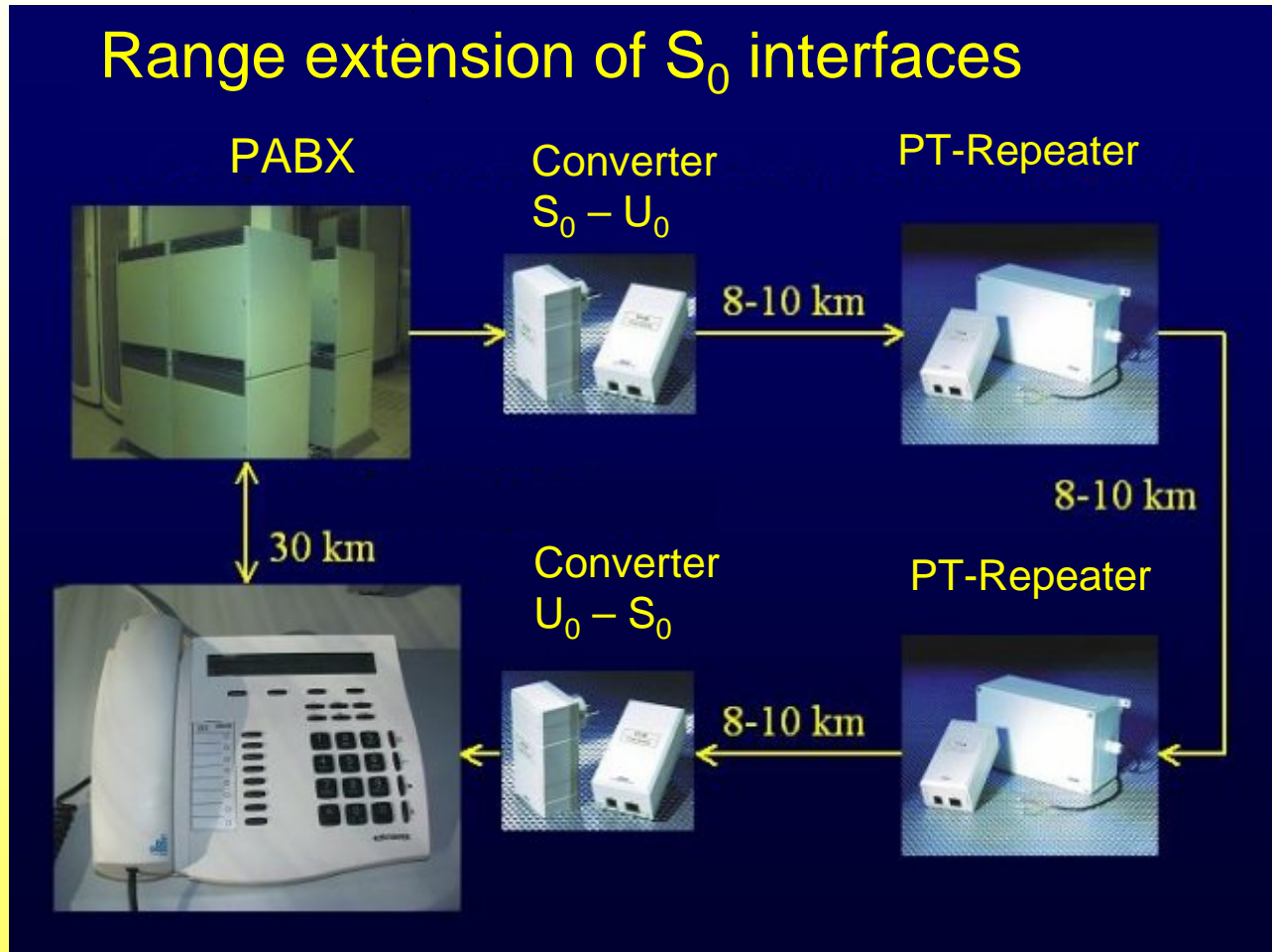
- ISDN – Converter and Repeater
- NovaTec Network Multiplexer
- NovaTec GSM Gateways
- NovaTec SIM-Card Server
- NovaTec Internet Pathfinder / ISDN over IP
- NovaTec Internet Pathfinder / VoIP / SIP
- NovaTec Encryption Gateway

Product range



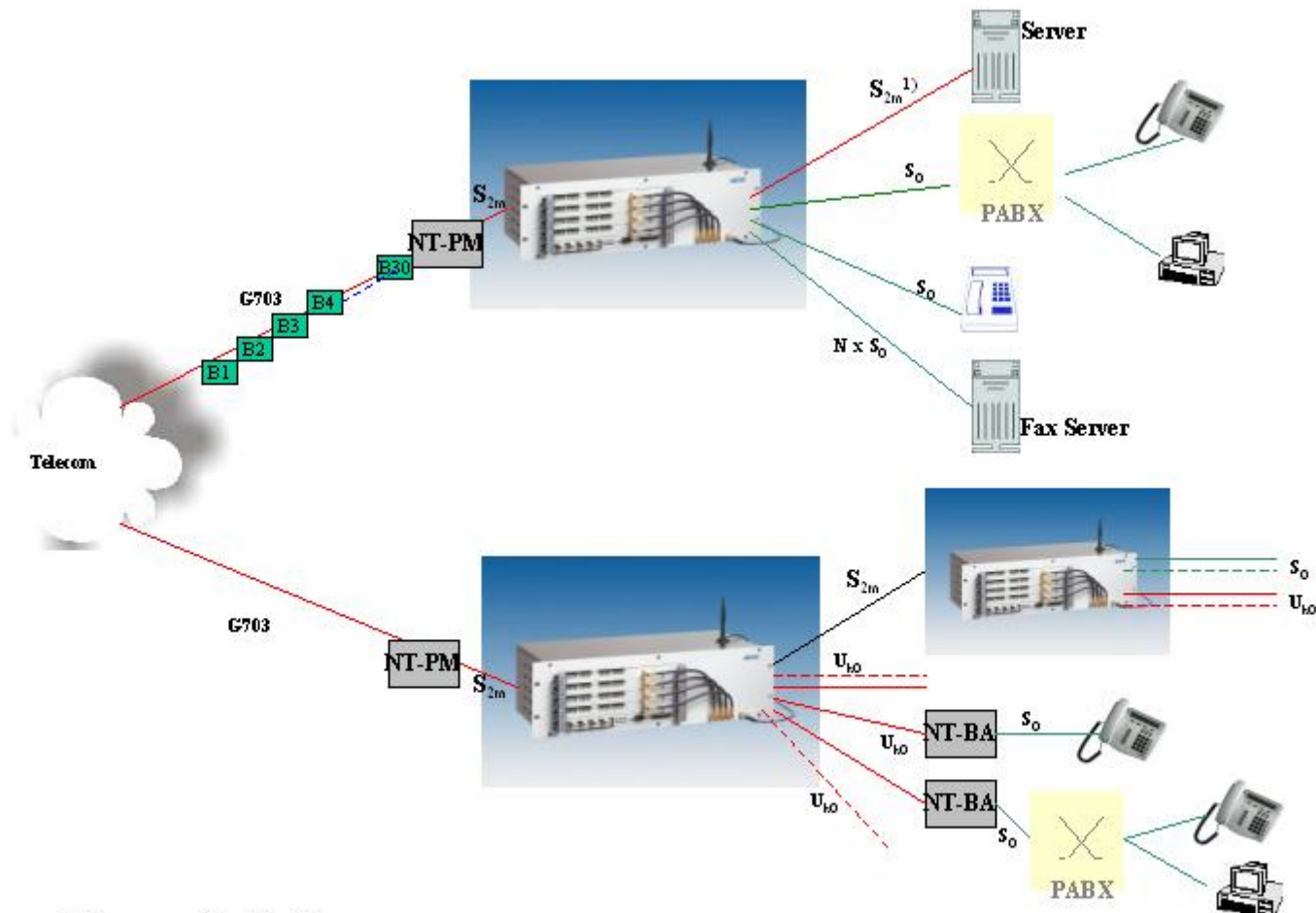
ISDN – Converter and Repeater

Range extension of S_0 interfaces



Product range

NovaTec Network Multiplexer

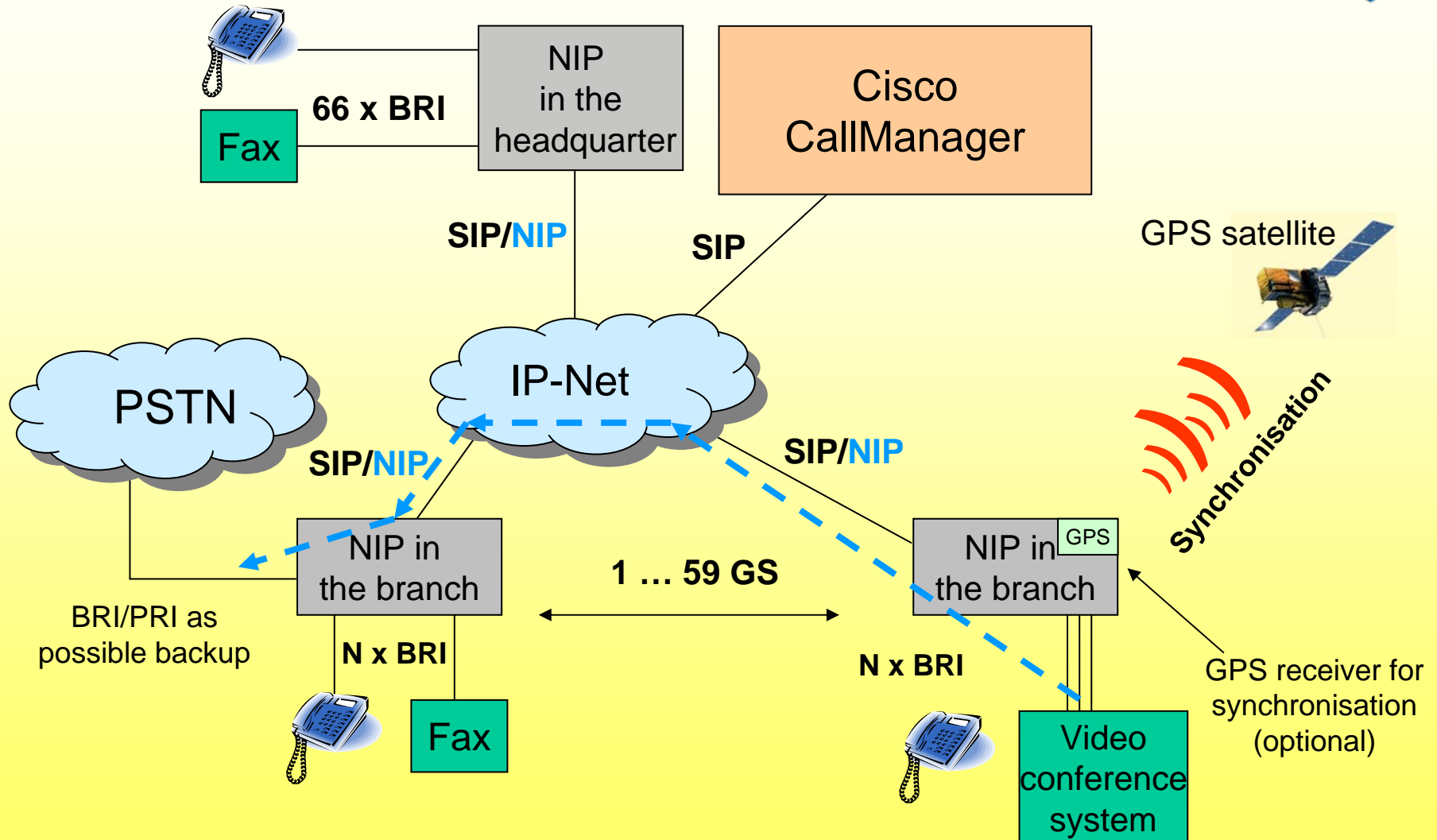


1) Programmable No of B Channels (e.g 10)

Product range



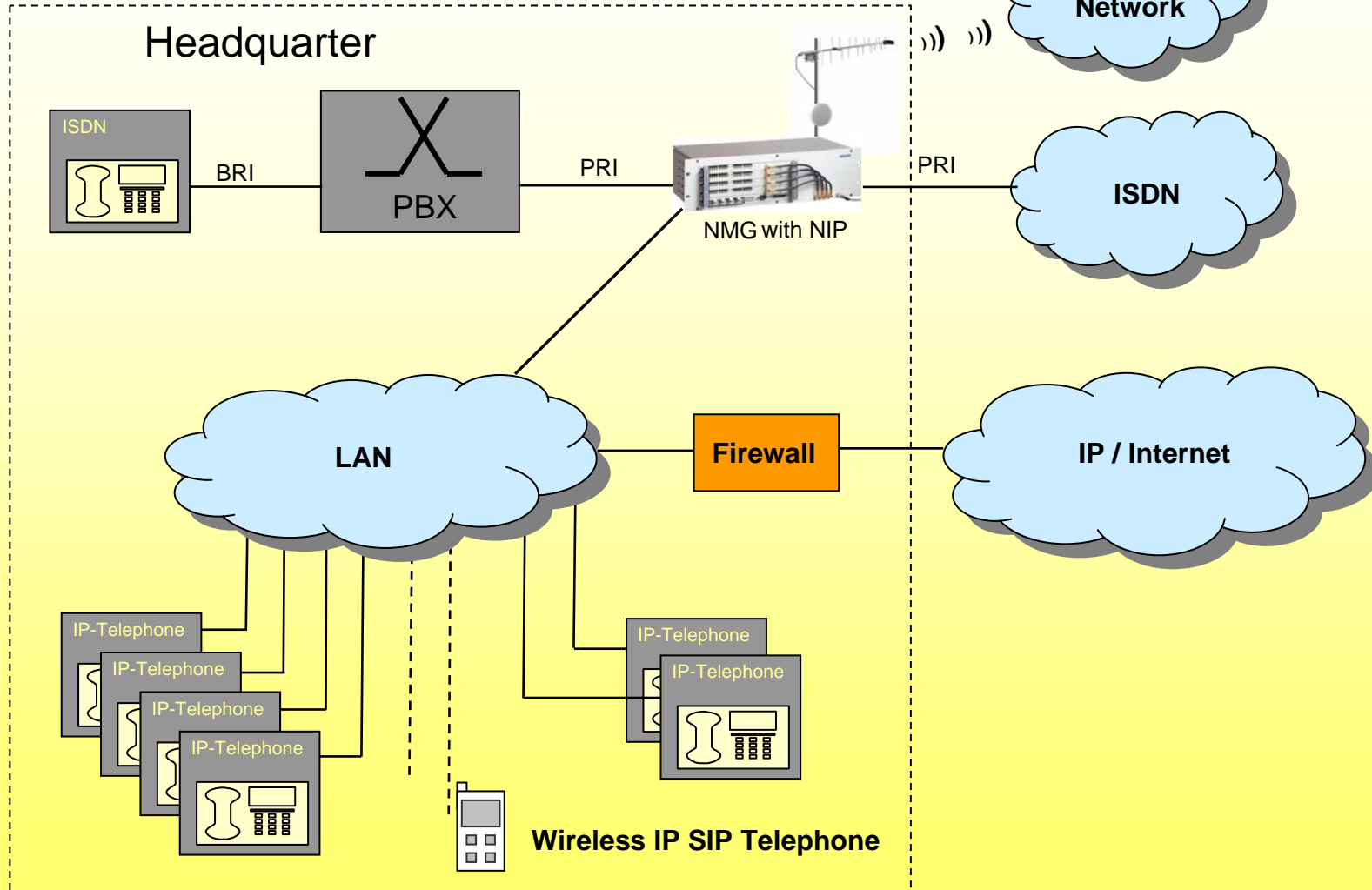
NovaTec Internet Pathfinder / ISDN over IP



Product range



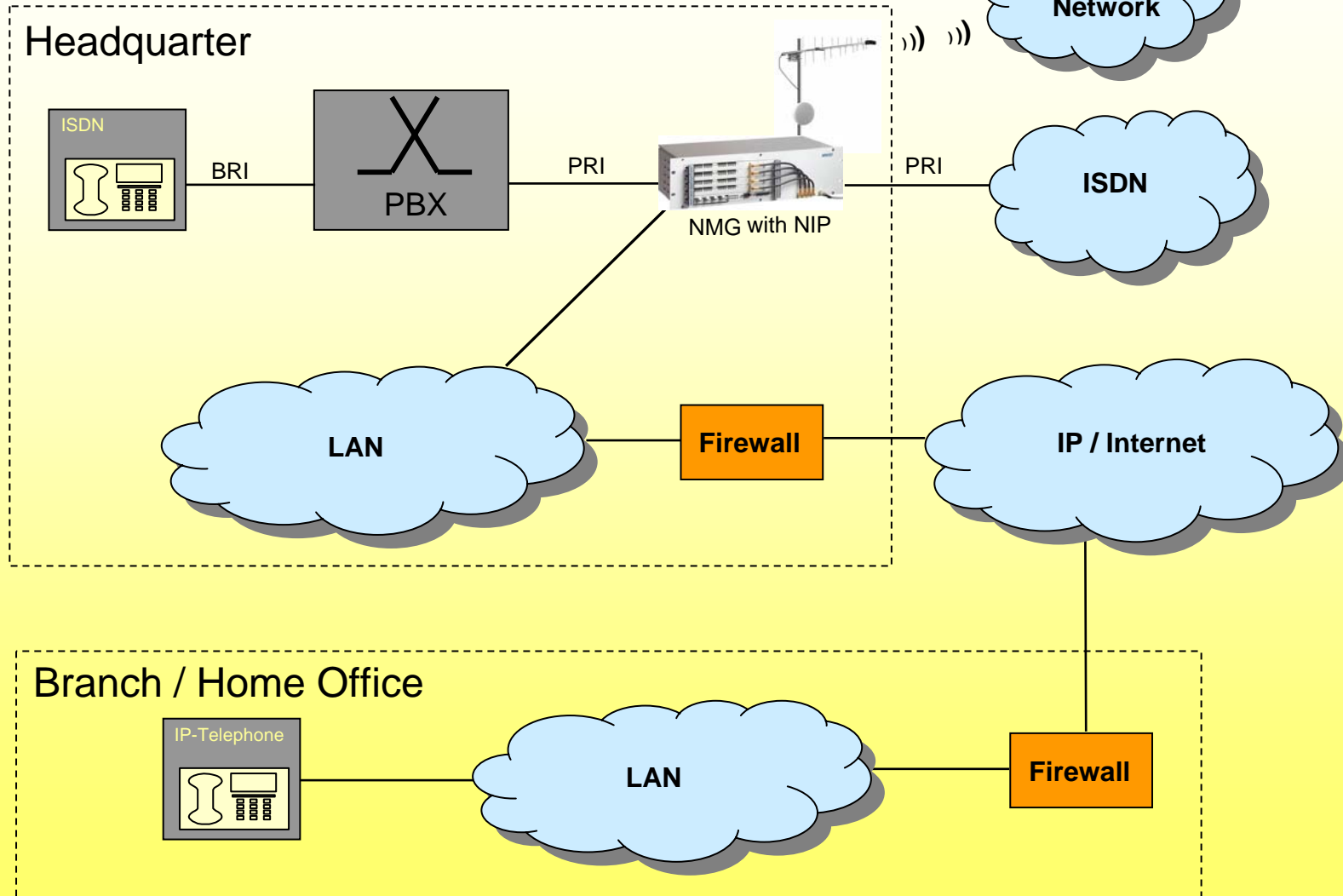
NovaTec Internet Pathfinder / VoIP / SIP



Product range

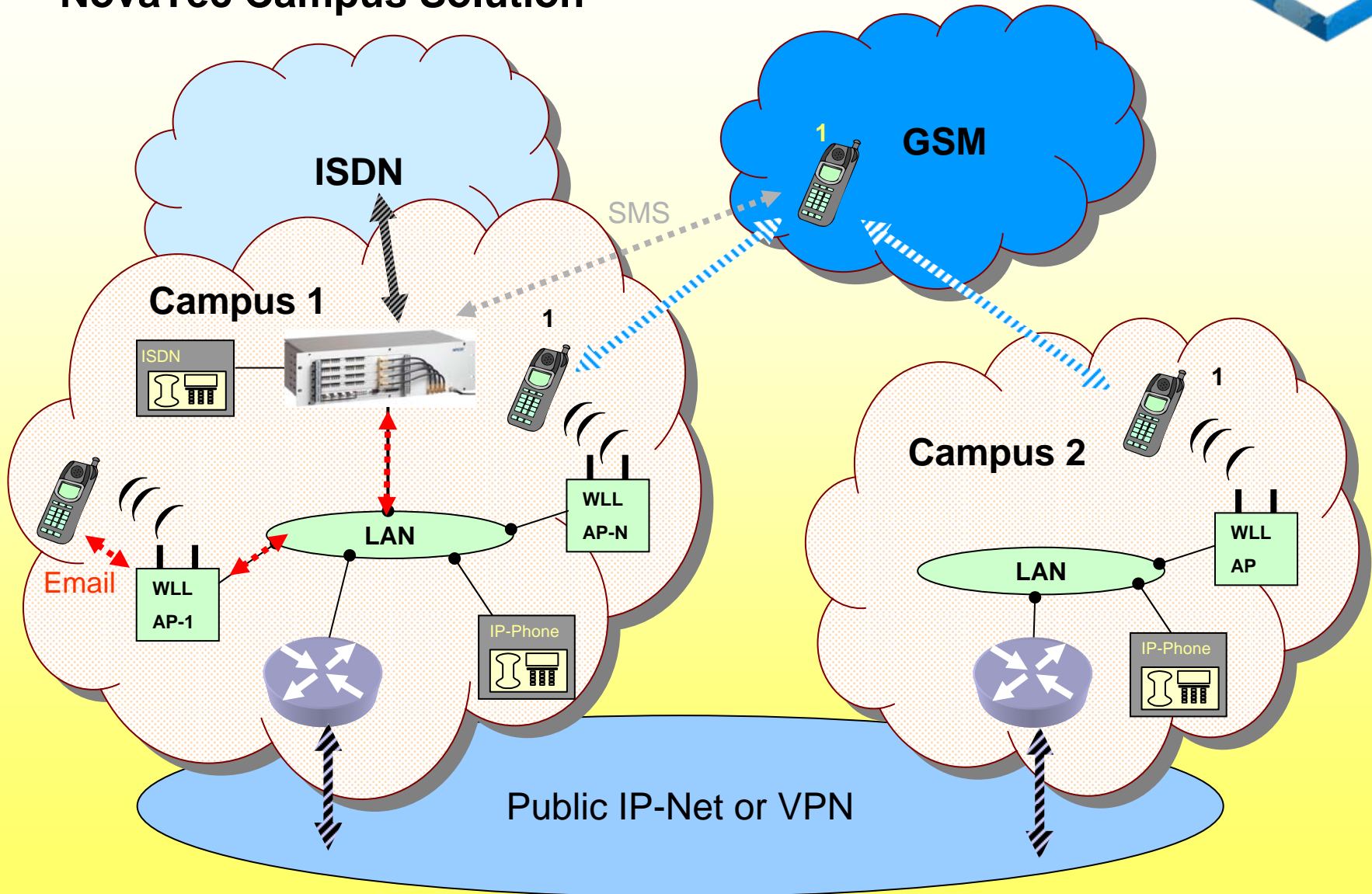


NovaTec Internet Pathfinder / VoIP / SIP



Product range

NovaTec Campus Solution

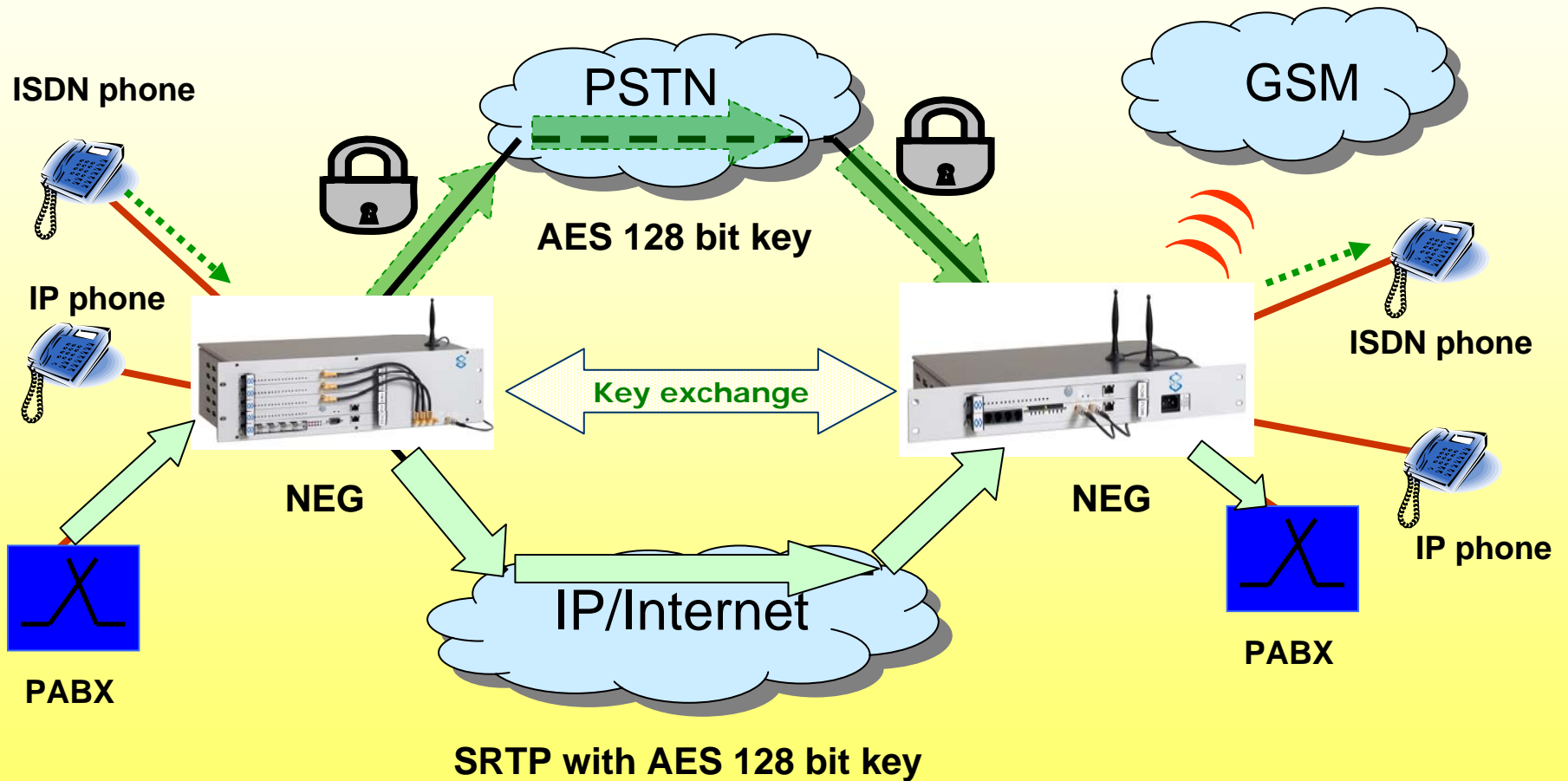


Product range



- Consistent numbering plan for all end devices at all locations. Also for GSM end devices.
- No Switch hardware in Campus-2 necessary.
- All common SIP end devices can be connected (e. g. Siemens Gigaset SL75, Nokia E60 Business-Smartphone, Cisco, AVAYA, SNOM, ELMPEG VoIP Telephone).
- Number masking for signalling of a uniform telephone number to the ISDN.
- WLAN, LAN and WAN are used for data as well as voice.
- Encryption for secure voice and data transmission.
- SMS-to-Email and Messenger set new courses in office communication.

NEG – NovaTec Encryption Gateway



Product range

NovaTec Mobile Gateway: models and types



Type S 5+



- modular
- only one extension card possible
- as wall, 19" and table chassis
- VoIP, Email-to-SMS, GSM, ISDN possible

Type S 6



- modular
- up to four extension cards possible
- only as 19" chassis
- VoIP, Email-to-SMS, GSM, ISDN possible

Type S 20






- modular
- up to 16 extension cards possible
- only as 19" chassis
- VoIP, Email-to-SMS, GSM, ISDN possible

Product range

NovaTec Mobile Gateway: models and types



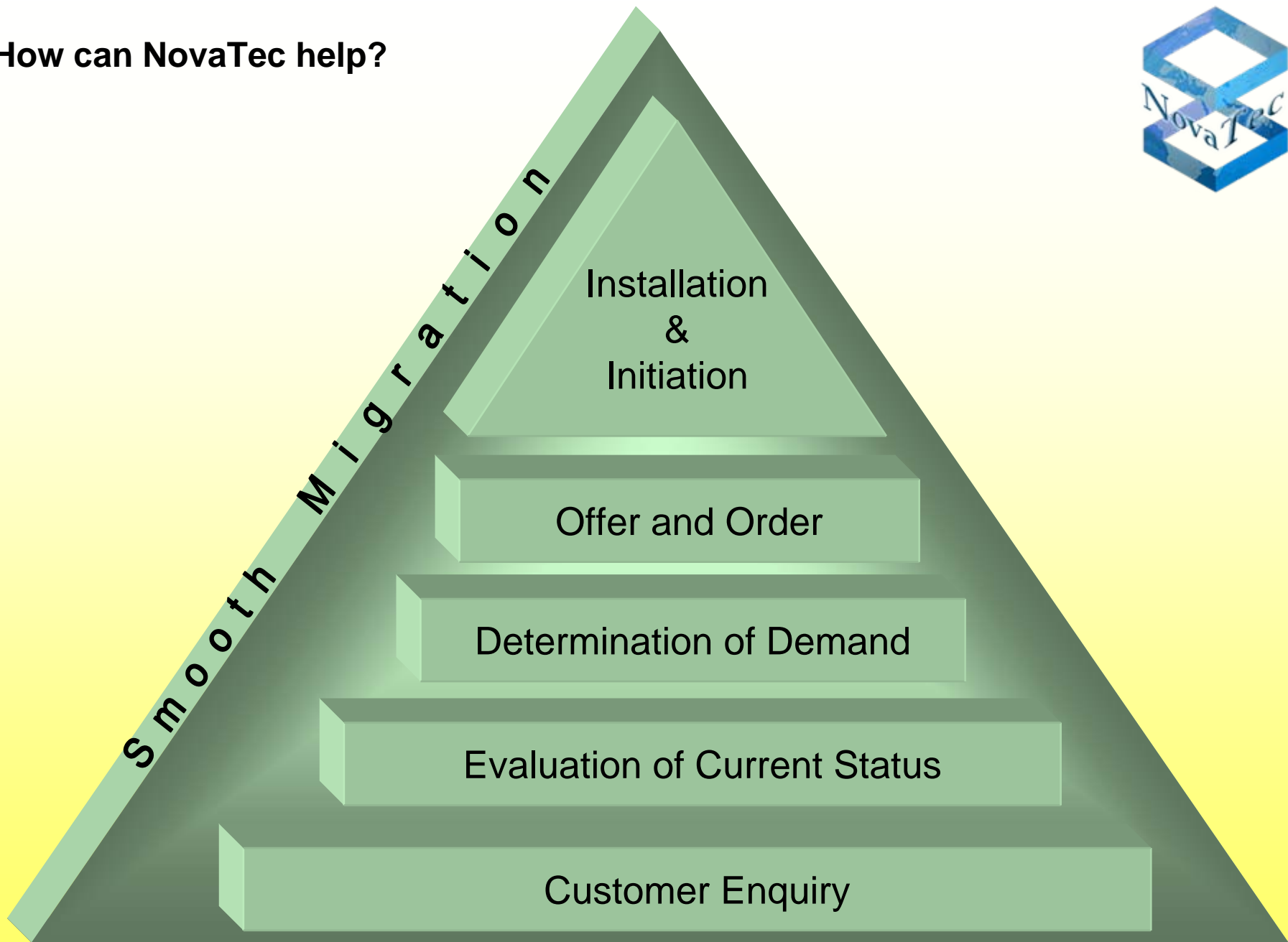
| Technical comparison | NovaTec Internet Pathfinder | | |
|---|--|---|---|
| Models |  |  |  |
| Width x Depth x Height | 19" chassis: 48 x 22 x 6 cm | 19" chassis: 48 x 22 x 14 cm | 19" chassis: 48 x 26 x 26.5 cm |
| | Desktop or wall-mounted chassis: 36 x 22 x 6 cm | | |
| Approximate weight | 2 up to 4 kg | 7 up to 10 kg | 7 up to 15.8 kg |
| Input power supply | 100 – 240 V~ | 100 – 240 V~ or 48 V ₌ | 100 – 240 V~ or 48 V ₌ |
| Multiple PRI connection (with optional echo cancellation and fails relay) | Yes | Yes | Yes |
| Max. number of BRI (S/T) interfaces, non-blocking | 20 | 30 | 30 |
| Max. number of U _{P0} interfaces (optional) | 0 | 0 | 0 |
| Number of media converters for VoIP | 4, 8, 16 and 32 | 4, 8, 16 and 32 | 4, 8, 16, 32 and 64 |
| GPS receiver for synchronisation | Optional | Optional | Optional |

Sales problems in 2006 and 2007 with the new ITC infrastructures



- The trends in 2006 have shown that the ITC infrastructures of companies and public authorities are going to be changed over to VoIP in 2007.
- Existing end devices and applications have to be considered when doing such changes within established infrastructures.
- According to our experience in 2006 most customers require the integration of their ISDN applications and end devices to the new net infrastructure.
- A smooth migration from the ISDN world to the VoIP infrastructure will be the road to success regarding realization and sales of the new systems.

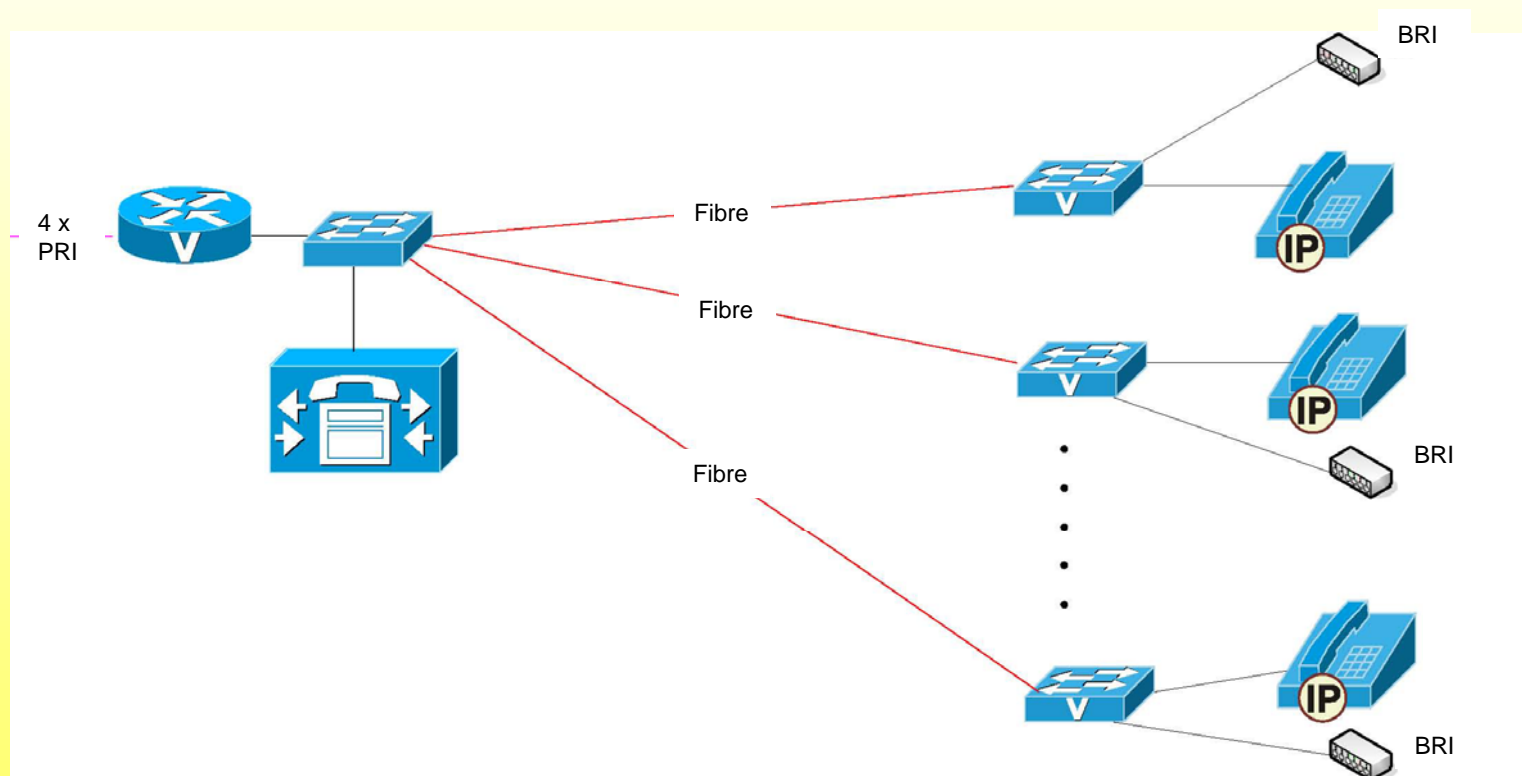
How can NovaTec help?



Field reports on realized projects



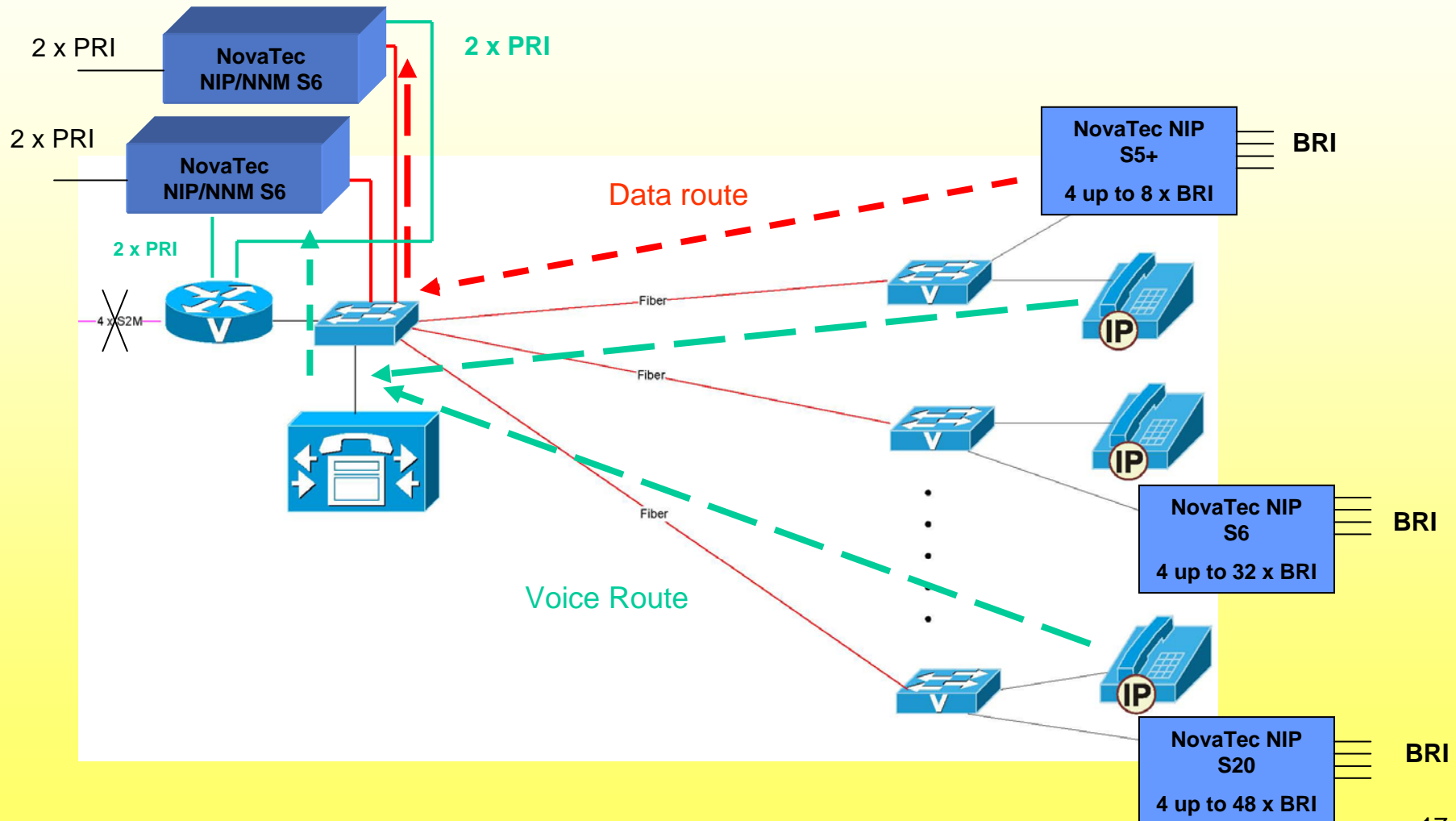
Problem description to NovaTec:



Field reports on realized projects

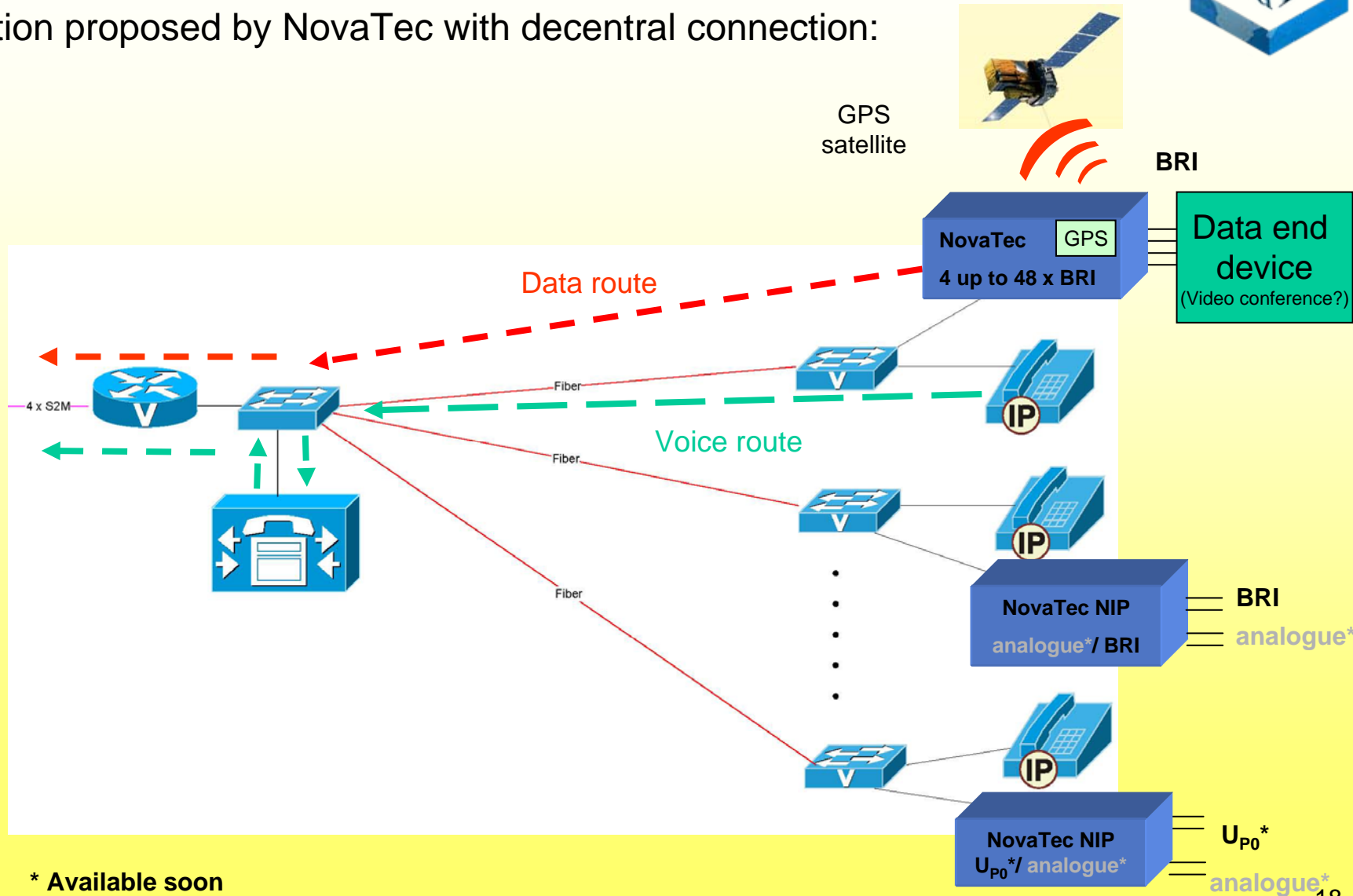


Solution proposed by NovaTec (for CallManager before 4.2 until April 2007):



Feasible realisation as from April 2007

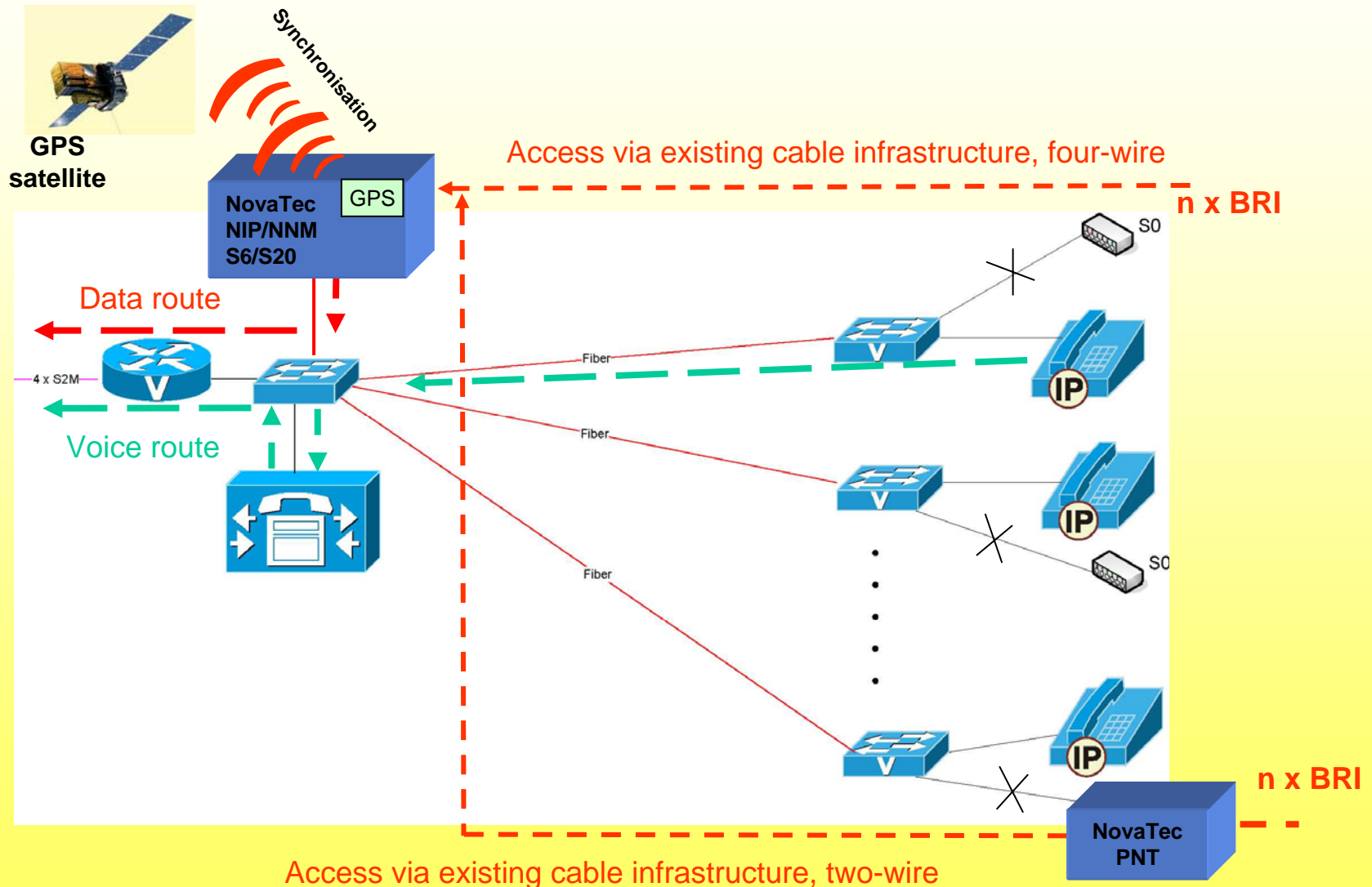
Solution proposed by NovaTec with decentral connection:



* Available soon

Feasible realisation as from April 2007

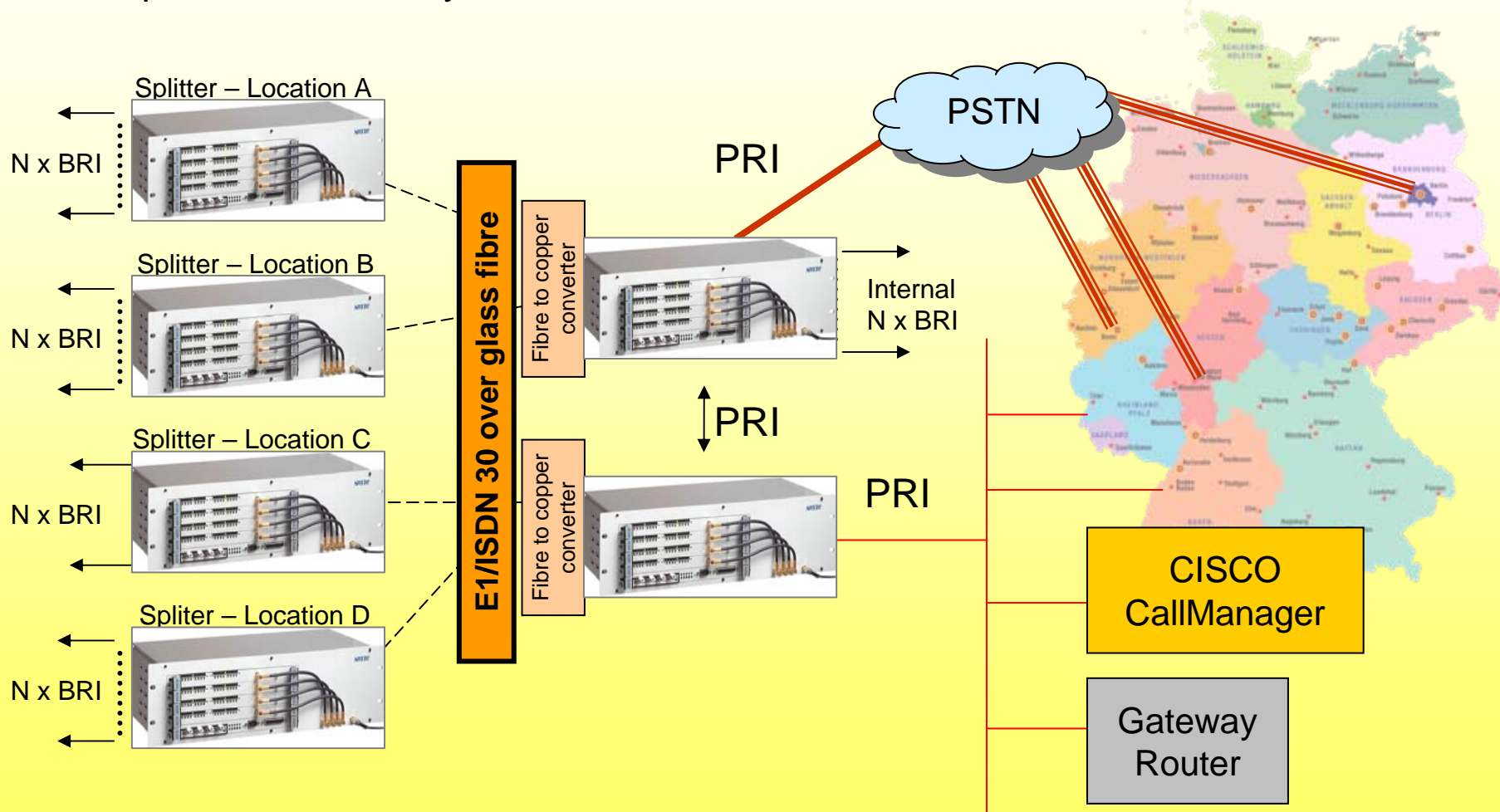
Solution proposed by NovaTec with central connection:



Field reports on realised projects



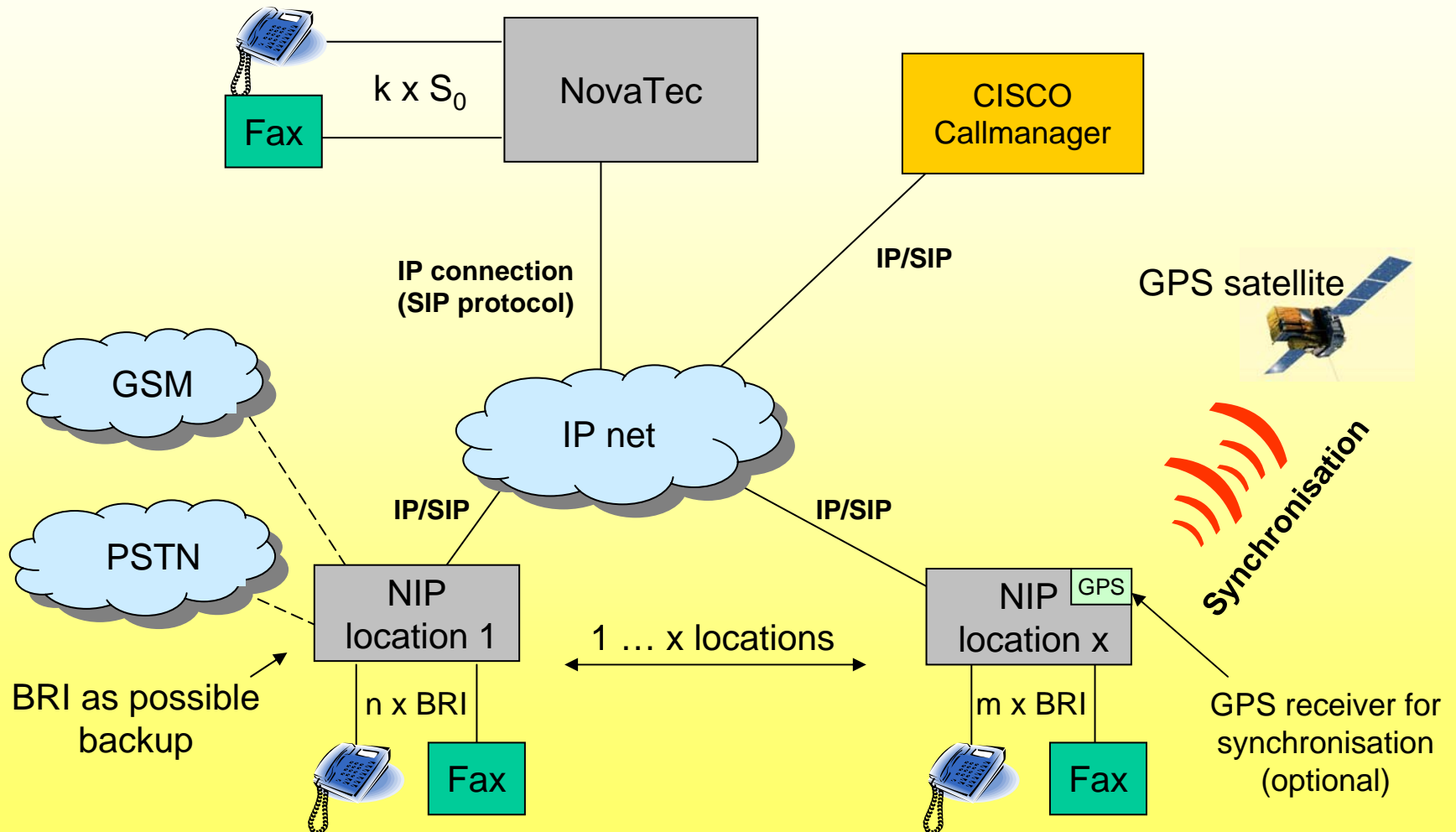
Example: Site networking and IP connection for the KfW bank realised in cooperation with T-Systems for sites in Frankfurt, Berlin and Bonn



Field reports on realized projects

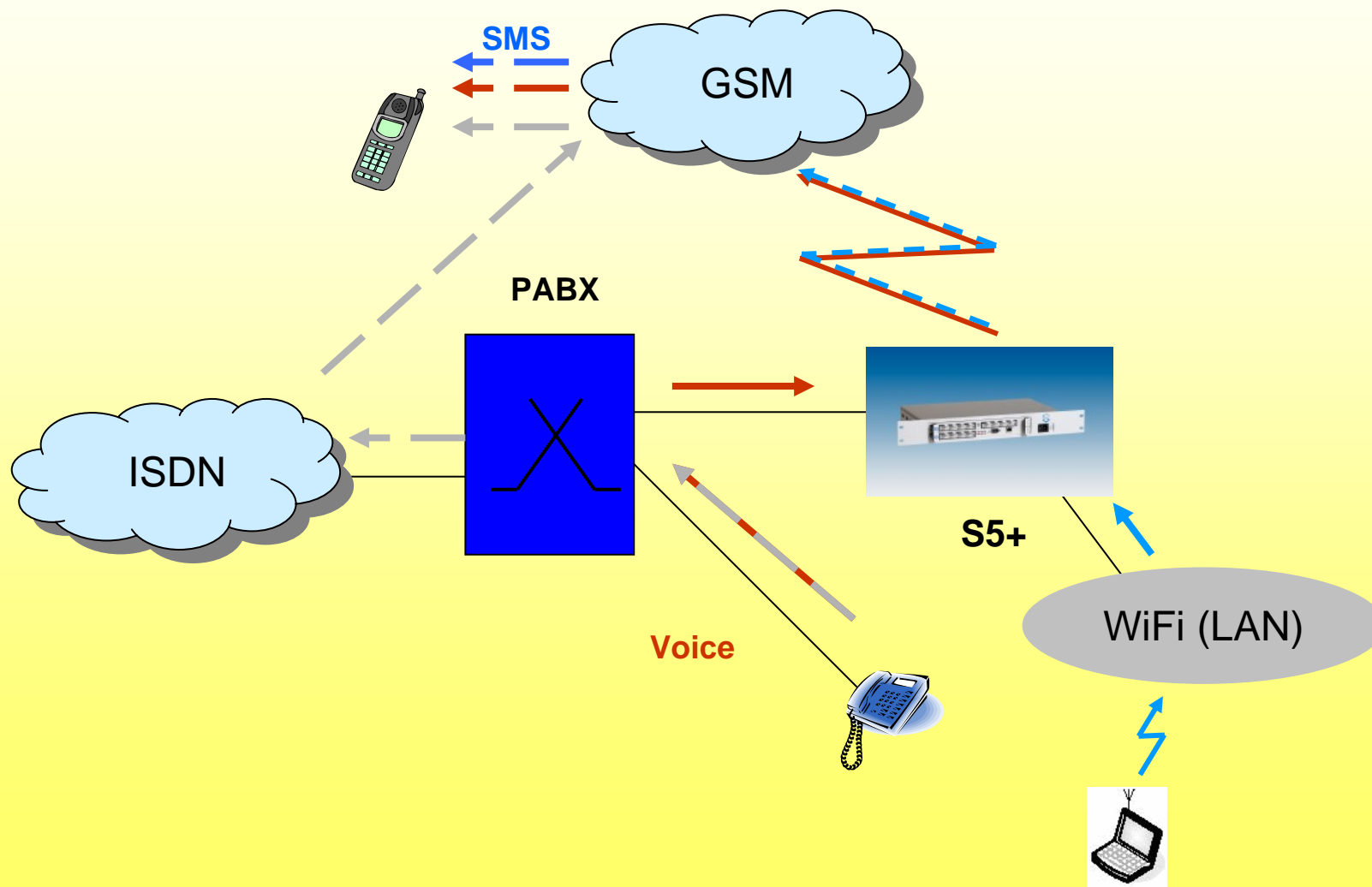


Example: Connection of ISDN interfaces of branches to the headquarter in Switzerland via IP.



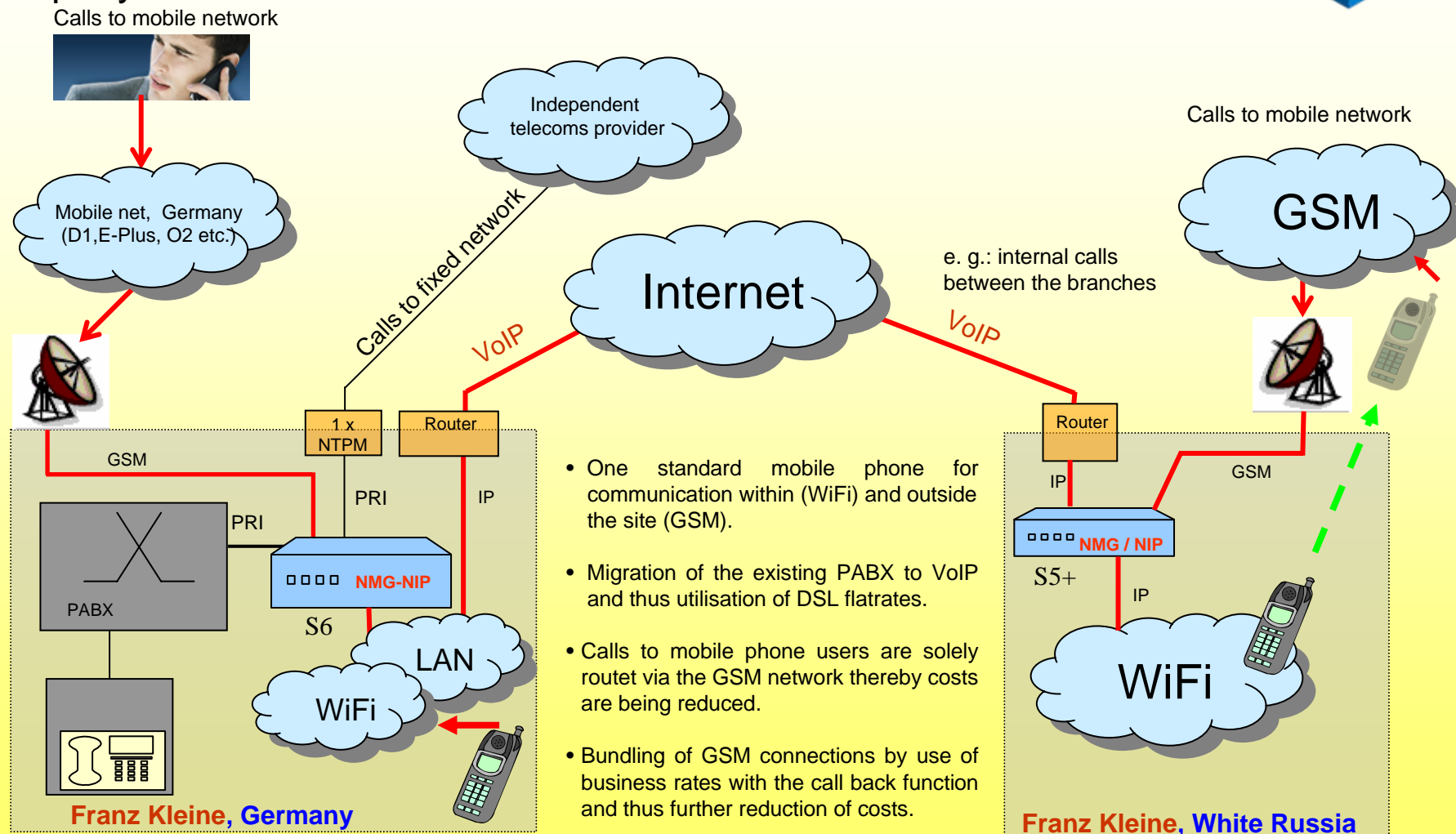
Field reports on realized projects

Example: Connection of the PABX of forwarder Michels, Paderborn, to the GSM network.



Field reports on realized projects

Example: Modern telecoms infrastructure with NovaTec products at company Franz Kleine



NovaTec products fitting the respective problem



Connection via IP or PRI for small to medium quantities of GSM or BRI interfaces without powering.

| |
|------------|
| S5+ |
| |



E. g. application as VoIP/ISDN PABX for small to medium-sized companies.

Connection via IP or PRI for medium to large quantities of GSM or BRI interfaces with powering.

| |
|-----------|
| S6 |
| |



E. g. application as VoIP/ISDN PABX for small to medium-sized companies.

Connection via IP or PRI for large quantities of GSM, PRI, BRI or U₀ interfaces with powering.

| |
|------------|
| S20 |
| |



E. g. application as VoIP/ISDN PABX for medium-sized to large companies.



The business activities that we offer

- Consultancy to find solutions.
- Assistance in preparing tenders.
- Assistance in preparing project offers.
- Delivery, coordination and installation at the customer's site.
- Acceptance tests before installation and briefing of the technical staff.
- Training of the technical staff.
- Service Level Agreements with and without spare part deliveries.



Why NovaTec?

NovaTec was founded in 1991. In the beginning NovaTec was given the responsibility of R&D and production for Nortel and Ericsson and has successfully developed ISDN access points for Meridian and MD110 systems for the European market.

1993 NovaTec began with development and introduction of its own product brands and successfully brought these to the market.

The first product PT was a big success and still is being manufactured and sold to this days. More than 20.000 units of these ISDN extenders from NovaTec have been sold in Germany and exported to a large number of countries such as Vietnam, USA, Turkey, Spain, Austria, Slovenia, Iceland, Italy, France, Switzerland, South Africa, Saudi Arabia (Aramco) and many others.



Why NovaTec?

1999: The first digital GSM Gateway function was born, and the NovaTec Mobile Gateway (NMG) was introduced to the worldwide market.

The worldwide first carrier selective GSM Gateway was installed in the year 2000 by NovaTec for Zarn Telecoms in Prague.

In the following years many more GSM Gateways were introduced by carriers in Denmark, Thailand, Australia, Italy, Spain, France, United Kingdom, Finland, Austria, Switzerland, South Africa, Cambodia, Vietnam, Singapore, Kuwait, Lebanon, Israel, Iceland and many others.

Why NovaTec?



2003:

Airport project with Alcatel for ground positioning systems of aircraft on the runway.

2003:

Beginning of the Metro Group project in conjunction with Cisco/Stemmer to provide ISDN-VoIP capabilities for their network of retail outlets worldwide.

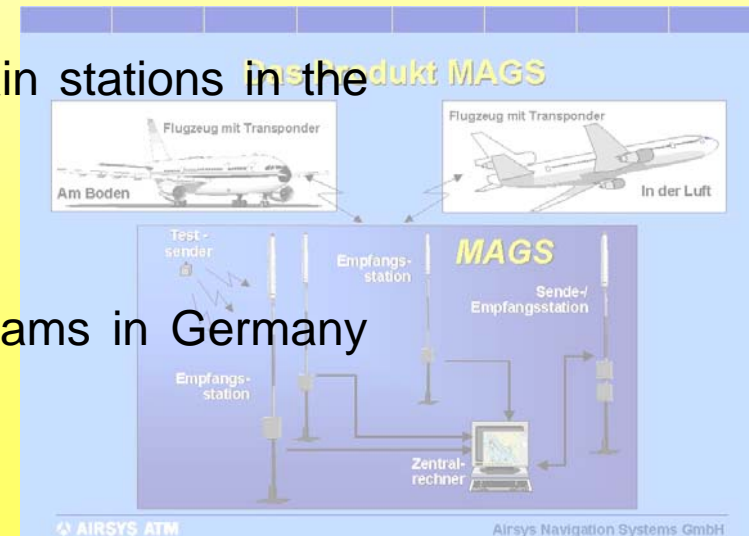


2004:

Emergency alarm call systems installed on all train stations in the city of Hannover based on NovaTec technology.

2004:

Networking of large amounts of windparks and dams in Germany with NovaTec products.



Why NovaTec?



2004:

NovaTec began to implement full SIP and VoIP functionalities in the NovaTec equipments in so doing ensured its place and standing in the worldwide market for the next generations.

2005:

Implementation of a full solution for ISDN, GSM, Callback and VoIP environment for 180 enterprises including for example: Microsoft, Barlow World, the City Council of Johannesburg, Standard Bank and various Call Centres in South Africa.

Since 2006:

Cooperation with T-Systems (German Telecom), Cisco and Dimension Data in Germany in a wide range of projects.

Microsoft®
ERICSSON

CISCO SYSTEMS®

AVAYA

Why NovaTec?



Our Vision

As one of the leading worldwide operational solutions and technology providers in the telecommunications field we strive to be the first choice for our customers ... always!!!

NovaTec's orientation lies in the consultation, implementation, production and completion of projects as well as the high performance technological platform and its applications that will always lead the way.

Why NovaTec?



Complimentary Services

In many projects complimentary services are required, these can range from project planning, cost evaluation or even requirement analysis as was the case with our customer Malaysian Telecom.

NovaTec provided services to a number of customers ranging from quotations, preparation for tenders, customs declarations and up to the completion of all logistical tasks, and continue to offer these services to all of our international partners.





Contact us

If you would like to find out more about our products, or have any questions please contact NovaTec at the following address:

info@novatec.de

or just contact our sales team on the following number:

+49 (0)5251 1589-610

Thank you for your attention!