



NovaTec/TransNova® SIP Gateway S3



The **S3 SIP Gateway** enables the operation of the preferable ISDN devices such as PC cards, ISDN PBX's or ISDN video-conference equipment in an IP network. Analogue equipment such as faxes, modems or even telephones can also be attached.

The S3 was developed to distribute and connect the conventional digital and analogue equipment to an IP network economically. It can react as a VoIP-Host or as a VoIP-Terminal.

The **S3 SIP Gateway** is multitalented and has lots of capabilities. Such as:

- Integrating available video-conference equipment into a VoIP infrastructure.
- Operating U_{P0}-equipment and systems with a VoIP infrastructure.
- Operating equipment, systems and other industrial machines with analogue ISDN BRI or U_{P0} interfaces (for data and speech) to a VoIP infrastructure i. e. Cisco networks.
- Synchronised data transfer over VoIP infrastructure utilizing a GPS receiver.
- Worldwide spatial relocation of BRI respectively U_{P0} equipment over an IP network with D-channel transparency for proprietary protocols.
- End-to-End encryption of ISDN-BRI or U_{P0} equipment via IP network with SRTP (in the standard package) and via ISDN (optional).
- Fax-to-Email server function to T37 standard.

The **S3 SIP Gateway** is available in various versions and is version dependent offering the following interfaces:

- IP (SIP),
- two analogue interfaces including T38 for fax,
- one resp. two ISDN-BRI interface/s (TE/NT configurable),
- two U_{P0} interfaces (TE/NT configurable).

Selection of possible users:

- Private households,
- small and medium-sized enterprises,
- international enterprises,
- VoIP Providers (SIP),
- Internet Service Providers,
- Municipal Network Operators,
- Cable TV Providers.

Options:

- One useful option is the GPS-receiver, used to synchronize timing and clock sensitive ISDN applications such as ISDN video-conference equipment. Available tools can be used to locate remote equipment.
- The S3 can be implemented in the TransNova® Network-Management-System and can be used in its full range to monitor and maintain.
- ISDN-to-ISDN encryption guarantees complete tapping-free security for speech and data.

Housing (wall mounting and table top):

Depth x width x height: 4 x 21 x 16 cm

Weight including power supply: approx. 2 kg



We change the shape of the world



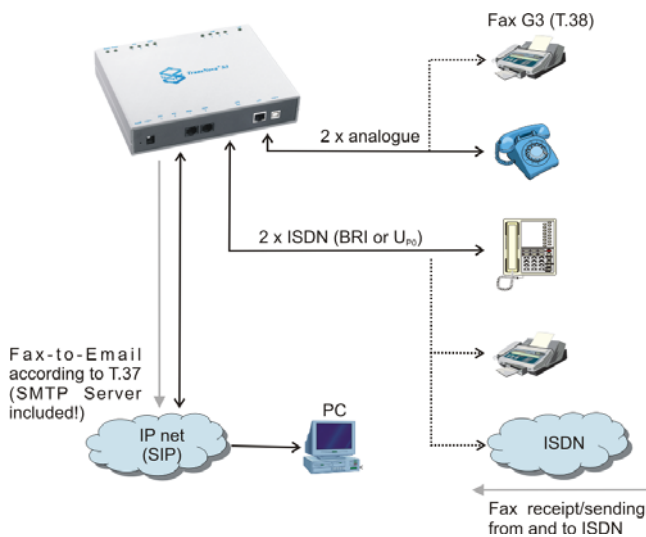
Delivery scope and ordering numbers:

NovaTec/TransNova® S3, power supply and cable, USB cable, mounting set, configuration CD incl. manual:

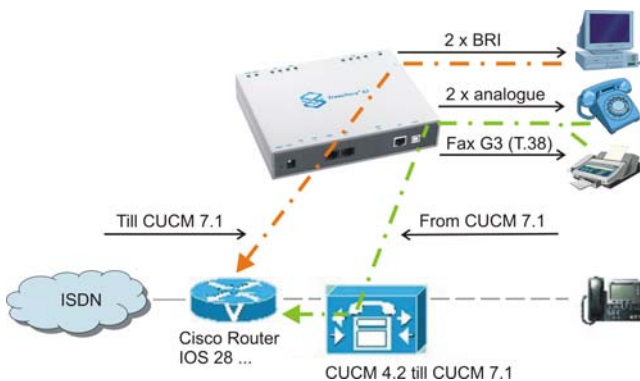
1F8000*	2 x BRI (both TE/NT configurable) / 4 x Codecs
1F8010	2 x BRI (both TE/NT configurable) / 4 x Codecs with GPS receiver
1F8020	2 x BRI (both TE/NT configurable) / 2 x analogue / 4 x Codecs
1F8025	1 x BRI (TE/NT configurable) / 2 x analogue / 4 x Codecs
1F8030	2 x U _{P0} (both TE/NT configurable) / 2 x analogue / 4 x Codecs
1F8040	2 x analogue / 4 x Codecs

* Cisco only distributes the TransNova® S3 (Cisco article no. VG-2BRI) in the version 2x BRI / 4x Codecs.

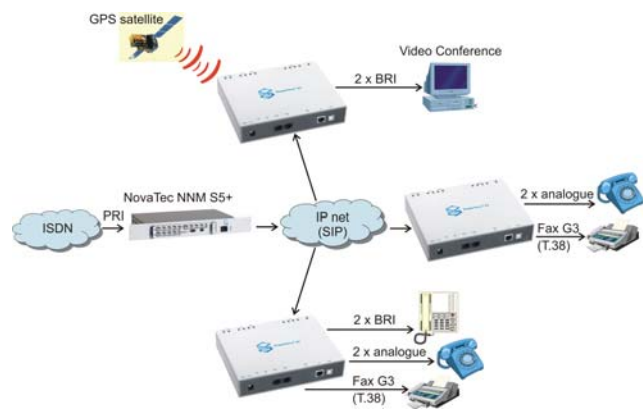
Example-1: S3 as ISDN + analogue terminal adapter with Fax-to-Email function.



Example-3: S3 within the Cisco CallManager and IOS environment.



Example-2: Complete networking with NovaTec components.



Example-4: Connection of BRI, U_{P0}- and analogue end devices via the IP net to a PABX.

